

# **PHILIPPINE BIDDING DOCUMENTS**

## **CY 2021 REPAIR AND REHABILITATION OF 6- CLASSROOM BUILDING OF PLARIDEL ES**

Project Identification No. CPB-INFRA-07-2021

Government of the Republic of the Philippines

**Sixth Edition  
July 2020**

# Preface

These Philippine Bidding Documents (PBDs) for the procurement of Infrastructure Projects (hereinafter referred to also as the “Works”) through Competitive Bidding have been prepared by the Government of the Philippines for use by all branches, agencies, departments, bureaus, offices, or instrumentalities of the government, including government-owned and/or -controlled corporations, government financial institutions, state universities and colleges, local government units, and autonomous regional government. The procedures and practices presented in this document have been developed through broad experience, and are for mandatory use in projects that are financed in whole or in part by the Government of the Philippines or any foreign government/foreign or international financing institution in accordance with the provisions of the 2016 revised Implementing Rules and Regulations (IRR) of Republic Act (RA) No. 9184.

The PBDs are intended as a model for admeasurements (unit prices or unit rates in a bill of quantities) types of contract, which are the most common in Works contracting.

The Bidding Documents shall clearly and adequately define, among others: (i) the objectives, scope, and expected outputs and/or results of the proposed contract; (ii) the eligibility requirements of Bidders; (iii) the expected contract duration; and (iv) the obligations, duties, and/or functions of the winning Bidder.

Care should be taken to check the relevance of the provisions of the PBDs against the requirements of the specific Works to be procured. If duplication of a subject is inevitable in other sections of the document prepared by the Procuring Entity, care must be exercised to avoid contradictions between clauses dealing with the same matter.

Moreover, each section is prepared with notes intended only as information for the Procuring Entity or the person drafting the Bidding Documents. They shall not be included in the final documents. The following general directions should be observed when using the documents:

- a. All the documents listed in the Table of Contents are normally required for the procurement of Infrastructure Projects. However, they should be adapted as necessary to the circumstances of the particular Project.
- b. Specific details, such as the “*name of the Procuring Entity*” and “*address for bid submission*,” should be furnished in the Instructions to Bidders, Bid Data Sheet, and Special Conditions of Contract. The final documents should contain neither blank spaces nor options.
- c. This Preface and the footnotes or notes in italics included in the Invitation to Bid, BDS, General Conditions of Contract, Special Conditions of Contract, Specifications, Drawings, and Bill of Quantities are not part of the text of the final document, although they contain instructions that the Procuring Entity should strictly follow.
- d. The cover should be modified as required to identify the Bidding Documents as to the names of the Project, Contract, and Procuring Entity, in addition to date of issue.

- e. Modifications for specific Procurement Project details should be provided in the Special Conditions of Contract as amendments to the Conditions of Contract. For easy completion, whenever reference has to be made to specific clauses in the Bid Data Sheet or Special Conditions of Contract, these terms shall be printed in bold typeface on Sections I (Instructions to Bidders) and III (General Conditions of Contract), respectively.
- f. For guidelines on the use of Bidding Forms and the procurement of Foreign-Assisted Projects, these will be covered by a separate issuance of the Government Procurement Policy Board.

# TABLE OF CONTENTS

<b>Glossary of Terms, Abbreviations, and Acronyms.....</b>	<b>5</b>
<b>Section I. Invitation to Bid .....</b>	<b>8</b>
<b>Section II. Instructions to Bidders.....</b>	<b>11</b>
1. Scope of Bid.....	12
2. Funding Information .....	12
3. Bidding Requirements.....	12
4. Corrupt, Fraudulent, Collusive, Coercive, and Obstructive Practices .....	12
5. Eligible Bidders.....	13
6. Origin of Associated Goods .....	13
7. Subcontracts .....	13
8. Pre-Bid Conference.....	13
9. Clarification and Amendment of Bidding Documents.....	14
10. Documents Comprising the Bid: Eligibility and Technical Components.....	14
11. Documents Comprising the Bid: Financial Component .....	14
12. Alternative Bids .....	15
13. Bid Prices .....	15
14. Bid and Payment Currencies.....	15
15. Bid Security.....	15
16. Sealing and Marking of Bids.....	15
17. Deadline for Submission of Bids .....	16
18. Opening and Preliminary Examination of Bids .....	16
19. Detailed Evaluation and Comparison of Bids.....	16
20. Post Qualification.....	17
21. Signing of the Contract .....	17
<b>Section III. Bid Data Sheet.....</b>	<b>18</b>
<b>Section IV. General Conditions of Contract .....</b>	<b>20</b>
1. Scope of Contract.....	21
2. Sectional Completion of Works .....	21
3. Possession of Site.....	21
4. The Contractor’s Obligations.....	21
5. Performance Security .....	22
6. Site Investigation Reports .....	22

7.	Warranty.....	22
8.	Liability of the Contractor.....	22
9.	Termination for Other Causes.....	22
10.	Dayworks .....	23
11.	Program of Work.....	23
12.	Instructions, Inspections and Audits .....	23
13.	Advance Payment.....	23
14.	Progress Payments .....	23
15.	Operating and Maintenance Manuals.....	24
	<b>Section V. Special Conditions of Contract.....</b>	<b>25</b>
	<b>Section VI. Specifications .....</b>	<b>27</b>
	<b>Section VII. Drawings.....</b>	<b>29</b>
	<b>Section VIII. Bill of Quantities .....</b>	<b>30</b>
	<b>Section IX. Checklist of Technical and Financial Documents .....</b>	<b>32</b>

# *Glossary of Terms, Abbreviations, and Acronyms*

**ABC** – Approved Budget for the Contract.

**ARCC** – Allowable Range of Contract Cost.

**BAC** – Bids and Awards Committee.

**Bid** – A signed offer or proposal to undertake a contract submitted by a bidder in response to and in consonance with the requirements of the bidding documents. Also referred to as *Proposal* and *Tender*. (2016 revised IRR, Section 5[c])

**Bidder** – Refers to a contractor, manufacturer, supplier, distributor and/or consultant who submits a bid in response to the requirements of the Bidding Documents. (2016 revised IRR, Section 5[d])

**Bidding Documents** – The documents issued by the Procuring Entity as the bases for bids, furnishing all information necessary for a prospective bidder to prepare a bid for the Goods, Infrastructure Projects, and/or Consulting Services required by the Procuring Entity. (2016 revised IRR, Section 5[e])

**BIR** – Bureau of Internal Revenue.

**BSP** – Bangko Sentral ng Pilipinas.

**CDA** – Cooperative Development Authority.

**Consulting Services** – Refer to services for Infrastructure Projects and other types of projects or activities of the GOP requiring adequate external technical and professional expertise that are beyond the capability and/or capacity of the GOP to undertake such as, but not limited to: (i) advisory and review services; (ii) pre-investment or feasibility studies; (iii) design; (iv) construction supervision; (v) management and related services; and (vi) other technical services or special studies. (2016 revised IRR, Section 5[i])

**Contract** – Refers to the agreement entered into between the Procuring Entity and the Supplier or Manufacturer or Distributor or Service Provider for procurement of Goods and Services; Contractor for Procurement of Infrastructure Projects; or Consultant or Consulting Firm for Procurement of Consulting Services; as the case may be, as recorded in the Contract Form signed by the parties, including all attachments and appendices thereto and all documents incorporated by reference therein.

**Contractor** – is a natural or juridical entity whose proposal was accepted by the Procuring Entity and to whom the Contract to execute the Work was awarded. Contractor as used in these Bidding Documents may likewise refer to a supplier, distributor, manufacturer, or consultant.

**CPI** – Consumer Price Index.

**DOLE** – Department of Labor and Employment.

**DTI** – Department of Trade and Industry.

**Foreign-funded Procurement or Foreign-Assisted Project** – Refers to procurement whose funding source is from a foreign government, foreign or international financing institution as specified in the Treaty or International or Executive Agreement. (2016 revised IRR, Section 5[b]).

**GFI** – Government Financial Institution.

**GOCC** – Government-owned and/or –controlled corporation.

**Goods** – Refer to all items, supplies, materials and general support services, except Consulting Services and Infrastructure Projects, which may be needed in the transaction of public businesses or in the pursuit of any government undertaking, project or activity, whether in the nature of equipment, furniture, stationery, materials for construction, or personal property of any kind, including non-personal or contractual services such as the repair and maintenance of equipment and furniture, as well as trucking, hauling, janitorial, security, and related or analogous services, as well as procurement of materials and supplies provided by the Procuring Entity for such services. The term “related” or “analogous services” shall include, but is not limited to, lease or purchase of office space, media advertisements, health maintenance services, and other services essential to the operation of the Procuring Entity. (2016 revised IRR, Section 5[r])

**GOP** – Government of the Philippines.

**Infrastructure Projects** – Include the construction, improvement, rehabilitation, demolition, repair, restoration or maintenance of roads and bridges, railways, airports, seaports, communication facilities, civil works components of information technology projects, irrigation, flood control and drainage, water supply, sanitation, sewerage and solid waste management systems, shore protection, energy/power and electrification facilities, national buildings, school buildings, hospital buildings, and other related construction projects of the government. Also referred to as *civil works or works*. (2016 revised IRR, Section 5[u])

**LGUs** – Local Government Units.

**NFCC** – Net Financial Contracting Capacity.

**NGA** – National Government Agency.

**PCAB** – Philippine Contractors Accreditation Board.

**PhilGEPS** - Philippine Government Electronic Procurement System.

**Procurement Project** – refers to a specific or identified procurement covering goods, infrastructure project or consulting services. A Procurement Project shall be described, detailed, and scheduled in the Project Procurement Management Plan prepared by the agency which shall be consolidated in the procuring entity's Annual Procurement Plan. (GPPB Circular No. 06-2019 dated 17 July 2019)

**PSA** – Philippine Statistics Authority.

**SEC** – Securities and Exchange Commission.

**SLCC** – Single Largest Completed Contract.

**UN** – United Nations.



## ***Section I. Invitation to Bid***

### **Notes on the Invitation to Bid**

The Invitation to Bid (IB) provides information that enables potential Bidders to decide whether to participate in the procurement at hand. The IB shall be posted in accordance with Section 21.2 of the 2016 revised IRR of RA No. 9184.

Apart from the essential items listed in the Bidding Documents, the IB should also indicate the following:

- a. The date of availability of the Bidding Documents, which shall be from the time the IB is first advertised/posted until the deadline for the submission and receipt of bids;
- b. The place where the Bidding Documents may be acquired or the website where it may be downloaded;
- c. The deadline for the submission and receipt of bids; and
- d. Any important bid evaluation criteria.

The IB should be incorporated into the Bidding Documents. The information contained in the IB must conform to the Bidding Documents and in particular to the relevant information in the Bid Data Sheet.



Republic of the Philippines  
Department of Education  
Region VI-Western Visayas  
SCHOOLS DIVISION OF SAGAY CITY

**Invitation to Bid for  
CY 2021 Repair and Rehabilitation of  
6-Classroom Building of Plaridel ES**  
CBP-INFRA-07-2021

1. The Department of Education, through the **CY 2021 GAA** intends to apply the sum of **Three Million Four Thousand Six Hundred Eighty Pesos and Twenty Two Centavos (Php 3,004,680.22)** being the ABC to payment under the contract, **CY 2021 Repair and Rehabilitation of 6-Classroom Building of Plaridel ES**. Bids received in excess of the ABC shall be automatically rejected at bid opening.

<b>Project Description/Intended Completion Date</b>	<b>School</b>	<b>Location</b>	<b>ABC</b>	<b>Contract Duration</b>
Repair and Rehabilitation of Various School Building (6 CL)  - 90 calendar days after the effectivity date indicated in the NTP	Plaridel Elementary School	Brgy. Plaridel, Sagay City, Negros Occidental	Php 3,004,680.22	90 cd

2. The Department of Education now invites bids for the above Procurement Project. **Completion of the Works is required within 90 CD.** Bidders should have completed a contract similar to the Project. The description of an eligible bidder is contained in the Bidding Documents, particularly, in Section II (Instructions to Bidders).
3. Bidding will be conducted through open competitive bidding procedures using non-discretionary “*pass/fail*” criterion as specified in the 2016 revised Implementing Rules and Regulations (IRR) of Republic Act (RA) No. 9184.
4. Interested bidders may obtain further information from Department of Education-Division of Sagay City and inspect the Bidding Documents at the address given below during office hours at 8 a.m.-5 p.m.
5. **A complete set of Bidding Documents may be acquired by interested Bidders on June 7-30, 2021** from the given address and website below and upon payment of the applicable fee for the Bidding Documents, pursuant to the latest Guidelines issued by the GPPB, in the amount of **Five Thousand Pesos (Php5,000.00)**. **The Procuring Entity shall allow the bidder to present its proof of payment for the fees through electronic means.**

6. The Department of Education Division of Sagay City will hold a **Pre-Bid Conference on June 15, 2021; 9:00 a.m. at the Conference Room of the New Division Office, Sitio Chloe, Brgy. Rizal, Sagay City and/or through videoconferencing**. Bidders who choose to attend the Pre-bid Conference are advised to **contact the BAC Secretariat for the videoconferencing link via Microsoft Teams**.
7. Bids must be duly received by the BAC Secretariat through **manual submission** at the office address indicated below **on or before June 30, 2021; 9 a.m.** Late bids shall not be accepted.
8. All bids must be accompanied by a bid security in any of the acceptable forms and in the amount stated in **ITB Clause 16**.
9. **Bid opening shall be on June 30, 2021; 9:00 a.m. at the Conference Room of the New Division Office, Sitio Chloe, Brgy. Rizal, Sagay City and/or through videoconferencing via Microsoft Teams**. Bids will be opened in the presence of the bidders' representatives who choose to attend the activity.
10. The Department of Education reserves the right to reject any and all bids, declare a failure of bidding, or not award the contract at any time prior to contract award in accordance with Sections 35.6 and 41 of the 2016 revised Implementing Rules and Regulations (IRR) of RA No. 9184, without thereby incurring any liability to the affected bidder or bidders.
11. For further information, please refer to:  
  
**LOUIENE GRACE B. MACATUAL**  
BAC Secretariat  
DepEd-Division of Sagay City  
Sitio Chloe, Brgy. Rizal, Sagay City  
(034) 722-2195 or 0930-682-5150
12. You may visit the following websites:  
  
For downloading of Bidding Documents: [www.depedsagay.com](http://www.depedsagay.com)

(Sgd.) **RUBY THERESE P. ALMENCION, PhD**  
OIC, Office of the Assistant Schools Division Superintendent  
BAC Chairman

## ***Section II. Instructions to Bidders***

### **Notes on the Instructions to Bidders**

This Section on the Instruction to Bidders (ITB) provides the information necessary for bidders to prepare responsive bids, in accordance with the requirements of the Procuring Entity. It also provides information on bid submission, eligibility check, opening and evaluation of bids, post-qualification, and on the award of contract.

## **1. Scope of Bid**

The Procuring Entity, Department of Education invites Bids for the **CY 2021 Repair and Rehabilitation of 6-Classroom School Building of Plaridel ES**, with Project Identification Number *CPB-INFRA-07-2021*.

The Procurement Project (referred to herein as “Project”) is for the construction of Works, as described in Section VI (Specifications).

## **2. Funding Information**

2.1. The GOP through the source of funding as indicated below for CY 2021 in the amount of **Three Million Four Thousand Six Hundred Eighty Pesos and Twenty Two Centavos (Php 3,004,680.22)**.

2.2. The source of funding is:

- a. NGA, the General Appropriations Act or Special Appropriations.

## **3. Bidding Requirements**

The Bidding for the Project shall be governed by all the provisions of RA No. 9184 and its 2016 revised IRR, including its Generic Procurement Manual and associated policies, rules and regulations as the primary source thereof, while the herein clauses shall serve as the secondary source thereof.

Any amendments made to the IRR and other GPPB issuances shall be applicable only to the ongoing posting, advertisement, or invitation to bid by the BAC through the issuance of a supplemental or bid bulletin.

The Bidder, by the act of submitting its Bid, shall be deemed to have inspected the site, determined the general characteristics of the contracted Works and the conditions for this Project, such as the location and the nature of the work; (b) climatic conditions; (c) transportation facilities; (c) nature and condition of the terrain, geological conditions at the site communication facilities, requirements, location and availability of construction aggregates and other materials, labor, water, electric power and access roads; and (d) other factors that may affect the cost, duration and execution or implementation of the contract, project, or work and examine all instructions, forms, terms, and project requirements in the Bidding Documents.

## **4. Corrupt, Fraudulent, Collusive, Coercive, and Obstructive Practices**

The Procuring Entity, as well as the Bidders and Contractors, shall observe the highest standard of ethics during the procurement and execution of the contract. They or through an agent shall not engage in corrupt, fraudulent, collusive, coercive, and obstructive practices defined under Annex “I” of the 2016 revised IRR of RA No. 9184 or other integrity violations in competing for the Project.

## 5. Eligible Bidders

- 5.1. Only Bids of Bidders found to be legally, technically, and financially capable will be evaluated.
- 5.2. The Bidder **must have an experience of having completed a Single Largest Completed Contract (SLCC) that is similar to this Project, equivalent to at least fifty percent (50%) of the ABC** adjusted, if necessary, by the Bidder to current prices using the PSA's CPI, except under conditions provided for in Section 23.4.2.4 of the 2016 revised IRR of RA No. 9184.

Stating, That **contractors under Small A and Small B categories without similar experience on the contract to be bid may be allowed to bid if the cost of such contract is not more than the Allowable Range of Contract Cost (ARCC) of their registration based on the guidelines as prescribed by the PCAB.**

A contract is considered to be "similar" to the contract to be bid if it has the major categories of work stated in the **BDS**.

- 5.3. For Foreign-funded Procurement, the Procuring Entity and the foreign government/foreign or international financing institution may agree on another track record requirement, as specified in the Bidding Document prepared for this purpose.
- 5.4. The Bidders shall comply with the eligibility criteria under Section 23.4.2 of the 2016 IRR of RA No. 9184.

## 6. Origin of Associated Goods

There is no restriction on the origin of Goods other than those prohibited by a decision of the UN Security Council taken under Chapter VII of the Charter of the UN.

## 7. Subcontracts

- 7.1. The Bidder may subcontract portions of the Project to the extent allowed by the Procuring Entity as stated herein, but in no case more than fifty percent (50%) of the Project.

The Procuring Entity has prescribed that:

- a. **Subcontracting is not allowed.**

## 8. Pre-Bid Conference

The Procuring Entity will hold a pre-bid conference for this Project on the specified date and time as indicated in paragraph 6 of the **IB**.

## 9. Clarification and Amendment of Bidding Documents

Prospective bidders may request for clarification on and/or interpretation of any part of the Bidding Documents. Such requests must be in writing and received by the Procuring Entity, either at its given address or through electronic mail indicated in the **IB**, at least ten (10) calendar days before the deadline set for the submission and receipt of Bids.

## 10. Documents Comprising the Bid: Eligibility and Technical Components

- 10.1. The first envelope shall contain the eligibility and technical documents of the Bid as specified in **Section IX. Checklist of Technical and Financial Documents**.
- 10.2. If the eligibility requirements or statements, the bids, and all other documents for submission to the BAC are in foreign language other than English, it must be accompanied by a translation in English, which shall be authenticated by the appropriate Philippine foreign service establishment, post, or the equivalent office having jurisdiction over the foreign bidder's affairs in the Philippines. For Contracting Parties to the Apostille Convention, only the translated documents shall be authenticated through an apostille pursuant to GPPB Resolution No. 13-2019 dated 23 May 2019. The English translation shall govern, for purposes of interpretation of the bid.
- 10.3. A valid PCAB License is required, and in case of joint ventures, a valid special PCAB License, and registration for the type and cost of the contract for this Project. Any additional type of Contractor license or permit shall be indicated in the **BDS**.
- 10.4. **A List of Contractor's key personnel (e.g., Project Manager, Project Engineers, Materials Engineers, and Foremen) assigned to the contract to be bid, with their complete qualification and experience data shall be provided.** These key personnel must meet the required minimum years of experience set in the **BDS**.
- 10.5. A List of Contractor's major equipment units, which are owned, leased, and/or under purchase agreements, supported by proof of ownership, certification of availability of equipment from the equipment lessor/vendor for the duration of the project, as the case may be, must meet the minimum requirements for the contract set in the **BDS**.

## 11. Documents Comprising the Bid: Financial Component

- 11.1. The second bid envelope shall contain the financial documents for the Bid as specified in **Section IX. Checklist of Technical and Financial Documents**.
- 11.2. Any bid exceeding the ABC indicated in paragraph 1 of the **IB** shall not be accepted.

- 11.3. For Foreign-funded procurement, a ceiling may be applied to bid prices provided the conditions are met under Section 31.2 of the 2016 revised IRR of RA No. 9184.

## **12. Alternative Bids**

Bidders shall submit offers that comply with the requirements of the Bidding Documents, including the basic technical design as indicated in the drawings and specifications. Unless there is a value engineering clause in the **BDS**, alternative Bids shall not be accepted.

## **13. Bid Prices**

All bid prices for the given scope of work in the Project as awarded shall be considered as fixed prices, and therefore not subject to price escalation during contract implementation, except under extraordinary circumstances as determined by the NEDA and approved by the GPPB pursuant to the revised Guidelines for Contract Price Escalation guidelines.

## **14. Bid and Payment Currencies**

- 14.1. Bid prices may be quoted in the local currency or tradeable currency accepted by the BSP at the discretion of the Bidder. However, for purposes of bid evaluation, Bids denominated in foreign currencies shall be converted to Philippine currency based on the exchange rate as published in the BSP reference rate bulletin on the day of the bid opening.

- 14.2. Payment of the contract price shall be made in:

- a. Philippine Pesos.

## **15. Bid Security**

- 15.1. The Bidder shall submit a Bid Securing Declaration or any form of Bid Security in the amount indicated in the **BDS**, which shall be not less than the percentage of the ABC in accordance with the schedule in the **BDS**.

- 15.2. **The Bid and bid security shall be valid until October 28, 2021.** Any bid not accompanied by an acceptable bid security shall be rejected by the Procuring Entity as non-responsive.

## **16. Sealing and Marking of Bids**

Each Bidder shall submit one copy of the first and second components of its Bid.



The Procuring Entity may request additional hard copies and/or electronic copies of the Bid. However, failure of the Bidders to comply with the said request shall not be a ground for disqualification.

If the Procuring Entity allows the submission of bids through online submission to the given website or any other electronic means, the Bidder shall submit an electronic copy of its Bid, which must be digitally signed. An electronic copy that cannot be opened or is corrupted shall be considered non-responsive and, thus, automatically disqualified.

## **17. Deadline for Submission of Bids**

The Bidders shall submit on the specified date and time and either at its physical address or through online submission as indicated in paragraph 7 of the **IB**.

## **18. Opening and Preliminary Examination of Bids**

18.1. The BAC shall open the Bids in public at the time, on the date, and at the place specified in paragraph 9 of the **IB**. The Bidders' representatives who are present shall sign a register evidencing their attendance. In case videoconferencing, webcasting or other similar technologies will be used, attendance of participants shall likewise be recorded by the BAC Secretariat.

In case the Bids cannot be opened as scheduled due to justifiable reasons, the rescheduling requirements under Section 29 of the 2016 revised IRR of RA No. 9184 shall prevail.

18.2. The preliminary examination of Bids shall be governed by Section 30 of the 2016 revised IRR of RA No. 9184.

## **19. Detailed Evaluation and Comparison of Bids**

19.1. The Procuring Entity's BAC shall immediately conduct a detailed evaluation of all Bids rated "*passed*" using non-discretionary pass/fail criteria. The BAC shall consider the conditions in the evaluation of Bids under Section 32.2 of 2016 revised IRR of RA No. 9184.

19.2. If the Project allows partial bids, all Bids and combinations of Bids as indicated in the **BDS** shall be received by the same deadline and opened and evaluated simultaneously so as to determine the Bid or combination of Bids offering the lowest calculated cost to the Procuring Entity. Bid Security as required by **ITB** Clause 15 shall be submitted for each contract (lot) separately.

19.3. In all cases, the NFCC computation pursuant to Section 23.4.2.6 of the 2016 revised IRR of RA No. 9184 must be sufficient for the total of the ABCs for all the lots participated in by the prospective Bidder.

## **20. Post Qualification**

Within a non-extendible period of five (5) calendar days from receipt by the Bidder of the notice from the BAC that it submitted the Lowest Calculated Bid, the Bidder shall submit its latest income and business tax returns filed and paid through the BIR Electronic Filing and Payment System (eFPS), and other appropriate licenses and permits required by law and stated in the **BDS**.

## **21. Signing of the Contract**

The documents required in Section 37.2 of the 2016 revised IRR of RA No. 9184 shall form part of the Contract. Additional Contract documents are indicated in the **BDS**.

## ***Section III. Bid Data Sheet***

### **Notes on the Bid Data Sheet (BDS)**

The Bid Data Sheet (BDS) consists of provisions that supplement, amend, or specify in detail, information, or requirements included in the ITB found in Section II, which are specific to each procurement.

This Section is intended to assist the Procuring Entity in providing the specific information in relation to corresponding clauses in the ITB and has to be prepared for each specific procurement.

The Procuring Entity should specify in the BDS information and requirements specific to the circumstances of the Procuring Entity, the processing of the procurement, and the bid evaluation criteria that will apply to the Bids. In preparing the BDS, the following aspects should be checked:

- a. Information that specifies and complements provisions of the ITB must be incorporated.
- b. Amendments and/or supplements, if any, to provisions of the ITB as necessitated by the circumstances of the specific procurement, must also be incorporated.

# Bid Data Sheet

ITB Clause																						
5.2	For this purpose, contracts similar to the Project refer to contracts which have the same major categories of work, which shall be:  <b>Construction of works, Repair and Rehabilitation</b>																					
7.1	<b>Subcontracting is not allowed.</b>																					
10.3	No further instructions.																					
10.4	The key personnel must meet the required minimum years of experience set below:  <table border="1" style="width: 100%; border-collapse: collapse;"> <thead> <tr> <th style="text-align: left;"><u>Key Personnel</u></th> <th style="text-align: center;"><u>General Experience</u></th> <th style="text-align: center;"><u>Relevant Experience</u></th> </tr> </thead> <tbody> <tr> <td><b>General Foreman</b></td> <td style="text-align: center;">5 yrs.</td> <td style="text-align: center;">2 yrs.</td> </tr> <tr> <td><b>Welder</b></td> <td style="text-align: center;">5 yrs.</td> <td style="text-align: center;">2 yrs.</td> </tr> <tr> <td><b>Carpenter</b></td> <td style="text-align: center;">5 yrs.</td> <td style="text-align: center;">2 yrs.</td> </tr> <tr> <td><b>Helper</b></td> <td style="text-align: center;">5 yrs.</td> <td style="text-align: center;">2 yrs.</td> </tr> <tr> <td><b>Mason</b></td> <td style="text-align: center;">5 yrs.</td> <td style="text-align: center;">2 yrs.</td> </tr> <tr> <td><b>Painter</b></td> <td style="text-align: center;">5 yrs.</td> <td style="text-align: center;">2 yrs.</td> </tr> </tbody> </table>	<u>Key Personnel</u>	<u>General Experience</u>	<u>Relevant Experience</u>	<b>General Foreman</b>	5 yrs.	2 yrs.	<b>Welder</b>	5 yrs.	2 yrs.	<b>Carpenter</b>	5 yrs.	2 yrs.	<b>Helper</b>	5 yrs.	2 yrs.	<b>Mason</b>	5 yrs.	2 yrs.	<b>Painter</b>	5 yrs.	2 yrs.
<u>Key Personnel</u>	<u>General Experience</u>	<u>Relevant Experience</u>																				
<b>General Foreman</b>	5 yrs.	2 yrs.																				
<b>Welder</b>	5 yrs.	2 yrs.																				
<b>Carpenter</b>	5 yrs.	2 yrs.																				
<b>Helper</b>	5 yrs.	2 yrs.																				
<b>Mason</b>	5 yrs.	2 yrs.																				
<b>Painter</b>	5 yrs.	2 yrs.																				
10.5	The minimum major equipment requirements are the following:  <b>Hand Tools, Welding Machine, One-Bagger Mixer, Bar Cutter</b>																					
12	No further instructions.																					
15.1	The bid security shall be in the form of a Bid Securing Declaration or any of the following forms and amounts: <ul style="list-style-type: none"> <li>a. The amount of not less than <b>Sixty Thousand Ninety Three Pesos and Sixty Centavos (Php 60,093.60)</b> if bid security is in cash, cashier's/manager's check, bank draft/guarantee or irrevocable letter of credit;</li> <li>b. The amount of not less than <b>One Hundred Fifty Thousand Two Hundred Thirty Four Pesos and One Centavo (Php 150,234.01)</b> if bid security is in Surety Bond.</li> </ul>																					
19.2	No further instructions.																					
20	No further instructions.																					
21	Additional contract documents relevant to the Project that may be required by existing laws and/or the Procuring Entity, such as construction schedule and S-curve, manpower schedule, construction methods, equipment utilization schedule, construction safety and health program approved by the DOLE, and other acceptable tools of project scheduling.																					

## ***Section IV. General Conditions of Contract***

### **Notes on the General Conditions of Contract**

The General Conditions of Contract (GCC) in this Section, read in conjunction with the Special Conditions of Contract in Section V and other documents listed therein, should be a complete document expressing all the rights and obligations of the parties.

Matters governing performance of the Contractor, payments under the contract, or matters affecting the risks, rights, and obligations of the parties under the contract are included in the GCC and Special Conditions of Contract.

Any complementary information, which may be needed, shall be introduced only through the Special Conditions of Contract.

## 1. Scope of Contract

This Contract shall include all such items, although not specifically mentioned, that can be reasonably inferred as being required for its completion as if such items were expressly mentioned herein. All the provisions of RA No. 9184 and its 2016 revised IRR, including the Generic Procurement Manual, and associated issuances, constitute the primary source for the terms and conditions of the Contract, and thus, applicable in contract implementation. Herein clauses shall serve as the secondary source for the terms and conditions of the Contract.

This is without prejudice to Sections 74.1 and 74.2 of the 2016 revised IRR of RA No. 9184 allowing the GPPB to amend the IRR, which shall be applied to all procurement activities, the advertisement, posting, or invitation of which were issued after the effectivity of the said amendment.

## 2. Sectional Completion of Works

If sectional completion is specified in the **Special Conditions of Contract (SCC)**, references in the Conditions of Contract to the Works, the Completion Date, and the Intended Completion Date shall apply to any Section of the Works (other than references to the Completion Date and Intended Completion Date for the whole of the Works).

## 3. Possession of Site

3.1 The Procuring Entity shall give possession of all or parts of the Site to the Contractor based on the schedule of delivery indicated in the **SCC**, which corresponds to the execution of the Works. If the Contractor suffers delay or incurs cost from failure on the part of the Procuring Entity to give possession in accordance with the terms of this clause, the Procuring Entity's Representative shall give the Contractor a Contract Time Extension and certify such sum as fair to cover the cost incurred, which sum shall be paid by Procuring Entity.

3.2 If possession of a portion is not given by the above date, the Procuring Entity will be deemed to have delayed the start of the relevant activities. The resulting adjustments in contract time to address such delay may be addressed through contract extension provided under Annex "E" of the 2016 revised IRR of RA No. 9184.

## 4. The Contractor's Obligations

The Contractor shall employ the key personnel named in the Schedule of Key Personnel indicating their designation, in accordance with **ITB** Clause 10.3 and specified in the **BDS**, to carry out the supervision of the Works.

The Procuring Entity will approve any proposed replacement of key personnel only if their relevant qualifications and abilities are equal to or better than those of the personnel listed in the Schedule.

## **5. Performance Security**

- 5.1. Within ten (10) calendar days from receipt of the Notice of Award from the Procuring Entity but in no case later than the signing of the contract by both parties, the successful Bidder shall furnish the performance security in any of the forms prescribed in Section 39 of the 2016 revised IRR.
- 5.2. The Contractor, by entering into the Contract with the Procuring Entity, acknowledges the right of the Procuring Entity to institute action pursuant to RA No. 3688 against any subcontractor be they an individual, firm, partnership, corporation, or association supplying the Contractor with labor, materials and/or equipment for the performance of this Contract.

## **6. Site Investigation Reports**

The Contractor, in preparing the Bid, shall rely on any Site Investigation Reports referred to in the SCC supplemented by any information obtained by the Contractor.

## **7. Warranty**

- 7.1. In case the Contractor fails to undertake the repair works under Section 62.2.2 of the 2016 revised IRR, the Procuring Entity shall forfeit its performance security, subject its property(ies) to attachment or garnishment proceedings, and perpetually disqualify it from participating in any public bidding. All payables of the GOP in his favor shall be offset to recover the costs.
- 7.2. The warranty against Structural Defects/Failures, except that occasioned-on force majeure, shall cover the period from the date of issuance of the Certificate of Final Acceptance by the Procuring Entity. Specific duration of the warranty is found in the SCC.

## **8. Liability of the Contractor**

Subject to additional provisions, if any, set forth in the SCC, the Contractor's liability under this Contract shall be as provided by the laws of the Republic of the Philippines.

If the Contractor is a joint venture, all partners to the joint venture shall be jointly and severally liable to the Procuring Entity.

## **9. Termination for Other Causes**

Contract termination shall be initiated in case it is determined *prima facie* by the Procuring Entity that the Contractor has engaged, before, or during the implementation of the contract, in unlawful deeds and behaviors relative to contract acquisition and implementation, such as, but not limited to corrupt, fraudulent, collusive, coercive, and obstructive practices as stated in ITB Clause 4.

## **10. Dayworks**

Subject to the guidelines on Variation Order in Annex “E” of the 2016 revised IRR of RA No. 9184, and if applicable as indicated in the **SCC**, the Dayworks rates in the Contractor’s Bid shall be used for small additional amounts of work only when the Procuring Entity’s Representative has given written instructions in advance for additional work to be paid for in that way.

## **11. Program of Work**

11.1. The Contractor shall submit to the Procuring Entity’s Representative for approval the said Program of Work showing the general methods, arrangements, order, and timing for all the activities in the Works. The submissions of the Program of Work are indicated in the **SCC**.

11.2. The Contractor shall submit to the Procuring Entity’s Representative for approval an updated Program of Work at intervals no longer than the period stated in the **SCC**. If the Contractor does not submit an updated Program of Work within this period, the Procuring Entity’s Representative may withhold the amount stated in the **SCC** from the next payment certificate and continue to withhold this amount until the next payment after the date on which the overdue Program of Work has been submitted.

## **12. Instructions, Inspections and Audits**

The Contractor shall permit the GOP or the Procuring Entity to inspect the Contractor’s accounts and records relating to the performance of the Contractor and to have them audited by auditors of the GOP or the Procuring Entity, as may be required.

## **13. Advance Payment**

The Procuring Entity shall, upon a written request of the Contractor which shall be submitted as a Contract document, make an advance payment to the Contractor in an amount not exceeding fifteen percent (15%) of the total contract price, to be made in lump sum, or at the most two installments according to a schedule specified in the **SCC**, subject to the requirements in Annex “E” of the 2016 revised IRR of RA No. 9184.

## **14. Progress Payments**

The Contractor may submit a request for payment for Work accomplished. Such requests for payment shall be verified and certified by the Procuring Entity’s Representative/Project Engineer. Except as otherwise stipulated in the **SCC**, materials and equipment delivered on the site but not completely put in place shall not be included for payment.



## **15. Operating and Maintenance Manuals**

- 15.1. If required, the Contractor will provide “as built” Drawings and/or operating and maintenance manuals as specified in the **SCC**.
- 15.2. If the Contractor does not provide the Drawings and/or manuals by the dates stated above, or they do not receive the Procuring Entity’s Representative’s approval, the Procuring Entity’s Representative may withhold the amount stated in the **SCC** from payments due to the Contractor.

## ***Section V. Special Conditions of Contract***

### **Notes on the Special Conditions of Contract**

Similar to the BDS, the clauses in this Section are intended to assist the Procuring Entity in providing contract-specific information in relation to corresponding clauses in the GCC found in Section IV.

The Special Conditions of Contract (SCC) complement the GCC, specifying contractual requirements linked to the special circumstances of the Procuring Entity, the Procuring Entity's country, the sector, and the Works procured. In preparing this Section, the following aspects should be checked:

- a. Information that complements provisions of the GCC must be incorporated.
- b. Amendments and/or supplements to provisions of the GCC as necessitated by the circumstances of the specific purchase, must also be incorporated.

However, no special condition which defeats or negates the general intent and purpose of the provisions of the GCC should be incorporated herein.

# Special Conditions of Contract

GCC Clause	
2	No further instructions.
4.1	No further instructions.
6	No further instructions.
7.2	<p><i>[Select one, delete the other.]</i></p> <p><i>[In case of permanent structures, such as buildings of types 4 and 5 as classified under the National Building Code of the Philippines and other structures made of steel, iron, or concrete which comply with relevant structural codes (e.g., DPWH Standard Specifications), such as, but not limited to, steel/concrete bridges, flyovers, aircraft movement areas, ports, dams, tunnels, filtration and treatment plants, sewerage systems, power plants, transmission and communication towers, railway system, and other similar permanent structures:]</i> Fifteen (15) years.</p> <p><i>[In case of semi-permanent structures, such as buildings of types 1, 2, and 3 as classified under the National Building Code of the Philippines, concrete/asphalt roads, concrete river control, drainage, irrigation lined canals, river landing, deep wells, rock causeway, pedestrian overpass, and other similar semi-permanent structures:]</i> Five (5) years.</p> <p><i>[In case of other structures, such as bailey and wooden bridges, shallow wells, spring developments, and other similar structures:]</i> Two (2) years.</p>
10	No further instructions.
11.1	The Contractor shall submit the Program of Work to the Procuring Entity's Representative within 10 days of delivery of the Notice of Award.
11.2	No further instructions.
13	The amount of the advance payment shall not exceed 15% of the total contract price and schedule of payment.
14	No further instructions.
15.1	No further instructions.
15.2	No further instructions.

## *Section VI. Specifications*

### **Notes on Specifications**

A set of precise and clear specifications is a prerequisite for Bidders to respond realistically and competitively to the requirements of the Procuring Entity without qualifying or conditioning their Bids. In the context of international competitive bidding, the specifications must be drafted to permit the widest possible competition and, at the same time, present a clear statement of the required standards of workmanship, materials, and performance of the goods and services to be procured. Only if this is done will the objectives of economy, efficiency, and fairness in procurement be realized, responsiveness of Bids be ensured, and the subsequent task of bid evaluation facilitated. The specifications should require that all goods and materials to be incorporated in the Works be new, unused, of the most recent or current models, and incorporate all recent improvements in design and materials unless provided otherwise in the Contract.

Samples of specifications from previous similar projects are useful in this respect. The use of metric units is mandatory. Most specifications are normally written specially by the Procuring Entity or its representative to suit the Works at hand. There is no standard set of Specifications for universal application in all sectors in all regions, but there are established principles and practices, which are reflected in these PBDs.

There are considerable advantages in standardizing General Specifications for repetitive Works in recognized public sectors, such as highways, ports, railways, urban housing, irrigation, and water supply, in the same country or region where similar conditions prevail. The General Specifications should cover all classes of workmanship, materials, and equipment commonly involved in construction, although not necessarily to be used in a particular Works Contract. Deletions or addenda should then adapt the General Specifications to the particular Works.

Care must be taken in drafting specifications to ensure that they are not restrictive. In the specification of standards for goods, materials, and workmanship, recognized international standards should be used as much as possible. Where other particular standards are used, whether national standards or other standards, the specifications should state that goods, materials, and workmanship that meet other authoritative standards, and which ensure substantially equal or higher quality than the standards mentioned, will also be acceptable. The following clause may be inserted in the SCC.

#### **Sample Clause: Equivalency of Standards and Codes**

Wherever reference is made in the Contract to specific standards and codes to be met by the goods and materials to be furnished, and work performed or tested, the provisions of the latest current edition or revision of the relevant standards and codes in effect shall apply, unless otherwise expressly stated in the Contract. Where such standards and codes are national, or relate to a particular country or region, other authoritative standards that ensure a substantially equal or higher quality than the standards and codes specified will be

accepted subject to the Procuring Entity's Representative's prior review and written consent. Differences between the standards specified and the proposed alternative standards shall be fully described in writing by the Contractor and submitted to the Procuring Entity's Representative at least twenty-eight (28) days prior to the date when the Contractor desires the Procuring Entity's Representative's consent. In the event the Procuring Entity's Representative determines that such proposed deviations do not ensure substantially equal or higher quality, the Contractor shall comply with the standards specified in the documents.

These notes are intended only as information for the Procuring Entity or the person drafting the Bidding Documents. They should not be included in the final Bidding Documents.

## *Section VII. Drawings*

**TABLE OF CONTENTS**

**ARCHITECTURAL**

A-1 PERSPECTIVE VIEW, TABLE OF CONTENTS

A-2 FLOOR PLAN, ELEVATIONS, RAMP DETAILS

A-3 ROOF PLAN, SCHEDULE OF DOOR & WINDOWS, SECTION, REFLECTED CEILING PLAN, GIRLS DETAIL

**STRUCTURAL**

S-1 ROOF-FRAMING PLAN, TRUSS DETAIL, SECTIONAL ELEVATION, PUBLIC CONNECTION DETAILS

**ELECTRICAL**

E-1 WIRING NOTES, LIGHTING LAYOUT

**SANITARY**

**OTHERS**



1 PERSPECTIVE VIEW  
A-1 SCALE: 1/8" = 1'-0"

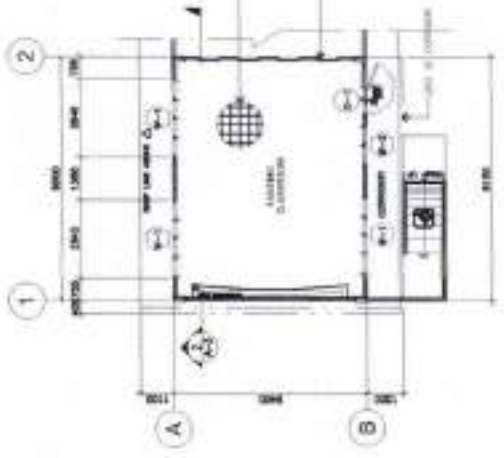


2 ACTUAL PHOTO  
A-1 SCALE: 1/8" = 1'-0"

<p>DEPARTMENT OF EDUCATION DepEd</p>	<p>PROJECT NO. 1 B-SS TYPE 1 MFSS</p>	<p>PROJECT TITLE: BAGONG LIPUNAN SCHOOL BUILDING (STANDARD HIGH - TYPE 1)</p>	<p>DESIGNER: [Signature] DATE: 10/10/2024</p>	<p>DATE: 10/10/2024</p>	<p>DATE: 10/10/2024</p>	<p>DATE: 10/10/2024</p>	<p>DATE: 10/10/2024</p>	<p>DATE: 10/10/2024</p>	<p>DATE: 10/10/2024</p>
<p>REVISIONS:</p>	<p>REVISIONS:</p>	<p>REVISIONS:</p>	<p>REVISIONS:</p>	<p>REVISIONS:</p>	<p>REVISIONS:</p>	<p>REVISIONS:</p>	<p>REVISIONS:</p>	<p>REVISIONS:</p>	<p>REVISIONS:</p>



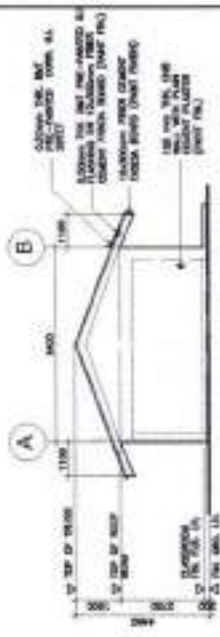
2 FRONT SIDE ELEVATION  
A-2 SCALE: 1/8"=1'-0"



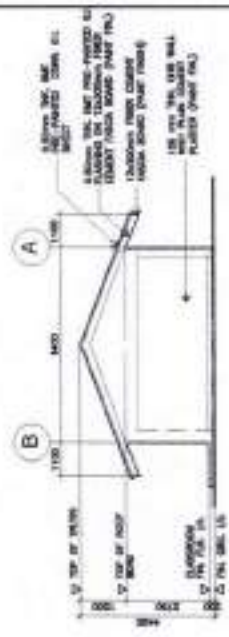
1 FLOOR PLAN  
A-2 SCALE: 1/8"=1'-0"



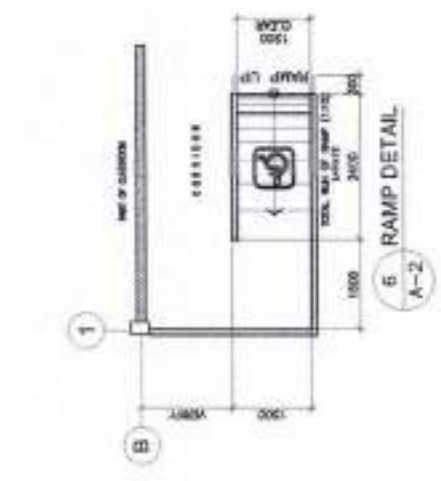
3 REAR SIDE ELEVATION  
A-2 SCALE: 1/8"=1'-0"



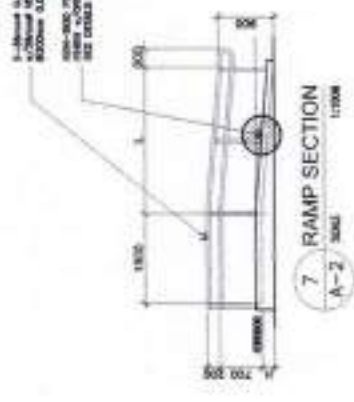
5 LEFT SIDE ELEVATION  
A-2 SCALE: 1/8"=1'-0"



4 RIGHT SIDE ELEVATION  
A-2 SCALE: 1/8"=1'-0"



6 RAMP DETAIL  
A-2 SCALE: 1/8"=1'-0"



7 RAMP SECTION  
A-2 SCALE: 1/8"=1'-0"

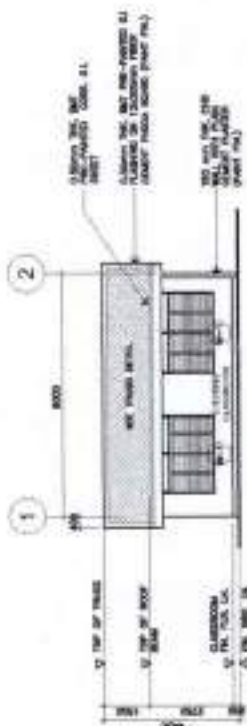
8-16mm dia. PVC ANCHORS,  
4-20mm dia. SUPPORT  
ROD(S) - SLOTTED TUBES  
SEE DETAILS

B SPOT DETAIL  
A-2 SCALE: 1/8"=1'-0"

NOTE:  
IF THERE ARE ANY CHANGES TO THE  
DESIGN, THE ARCHITECT SHALL BE ADVISED BY THE  
OWNER'S REPRESENTATIVE.

	DESIGNER: <i>[Signature]</i> ARCHITECT: <i>[Signature]</i> ENGINEER: <i>[Signature]</i> CONTRACTOR: <i>[Signature]</i>	PROJECT NO.: PROJECT SITE:	PROJECT NO.: PROJECT SITE:	SHEET NO.: SHEET TOTAL:
	DATE:	DRAWN BY:	CHECKED BY:	APPROVED BY:
BUREAU OF EDUCATION DEPARTMENT OF EDUCATION DIVISION OFFICE - <i>[City]</i>	BLDG TYPE: 1 NP-SS	BAGOING LUPKAN SCHOOL BUILDING (STANDARD DESIGN - TYPE 1)	DEPARTMENT OF EDUCATION Divided	SHEET NO.: SHEET TOTAL:

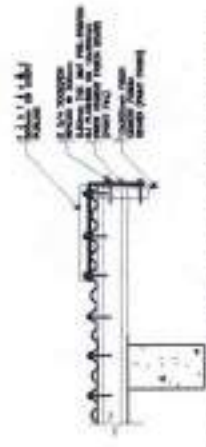




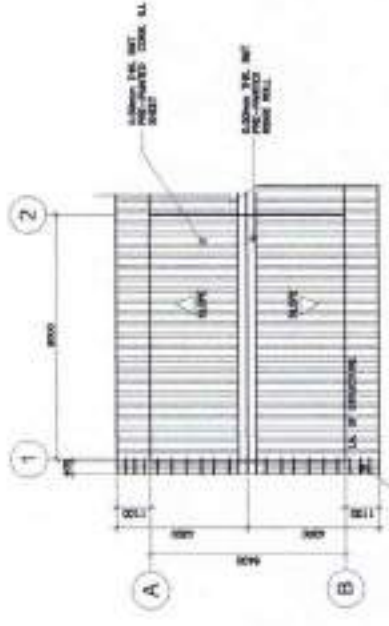
2 LONGITUDINAL SECTION  
A-3 SCALE: 1/8"=1'-0"



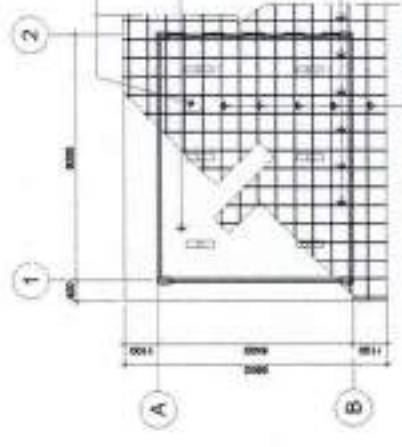
1 CROSS SECTION  
A-3 SCALE: 1/8"=1'-0"



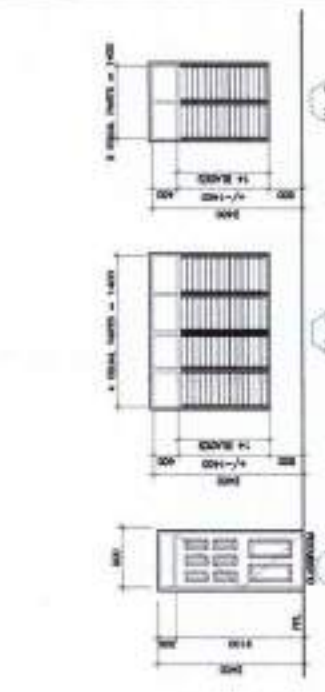
5 END FLASHING CONNECTION DETAIL  
A-3 SCALE: 1/8"=1'-0"



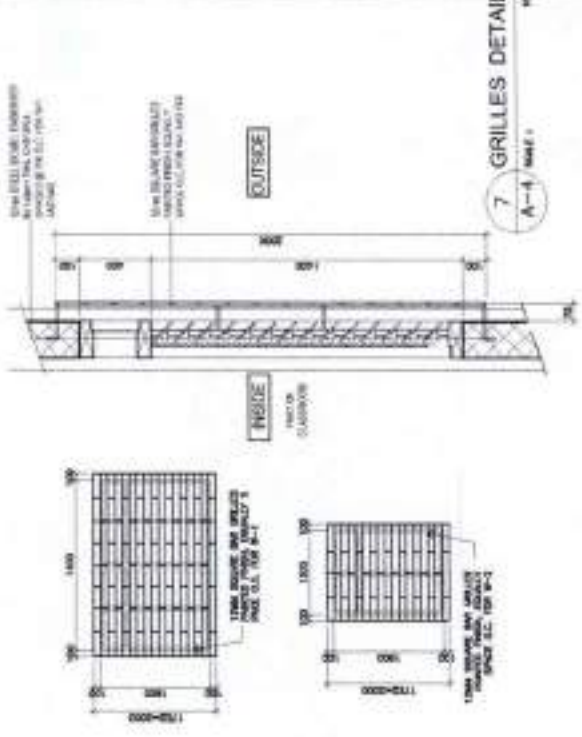
3 ROOF PLAN  
A-3 SCALE: 1/8"=1'-0"



4 REFLECTED CEILING PLAN  
A-3 SCALE: 1/8"=1'-0"

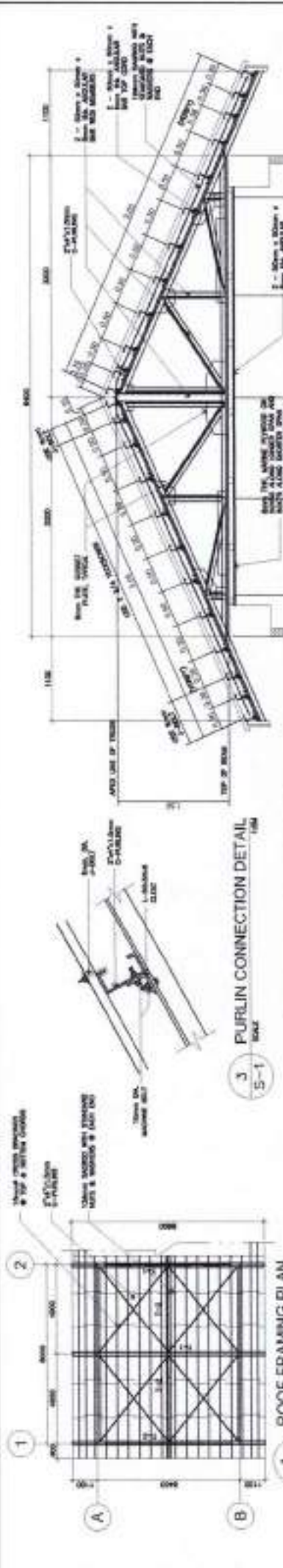


6 DOOR & WINDOW SCHEDULES  
A-3 SCALE: 1/8"=1'-0"



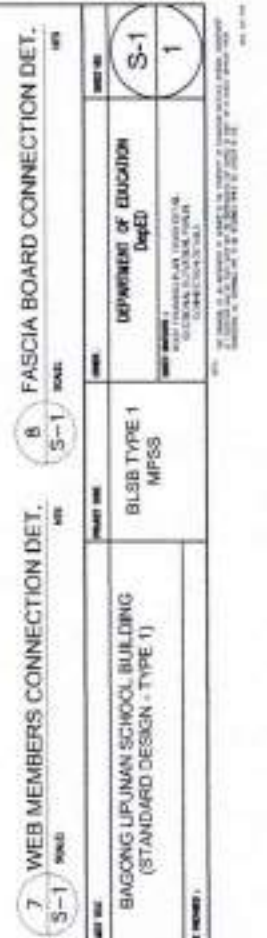
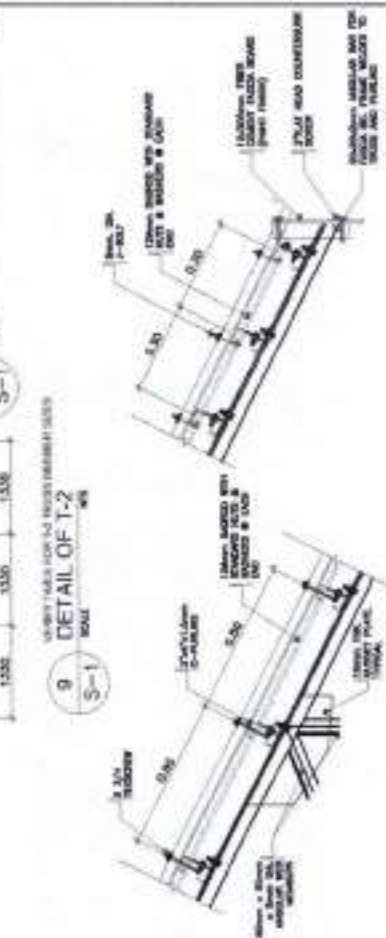
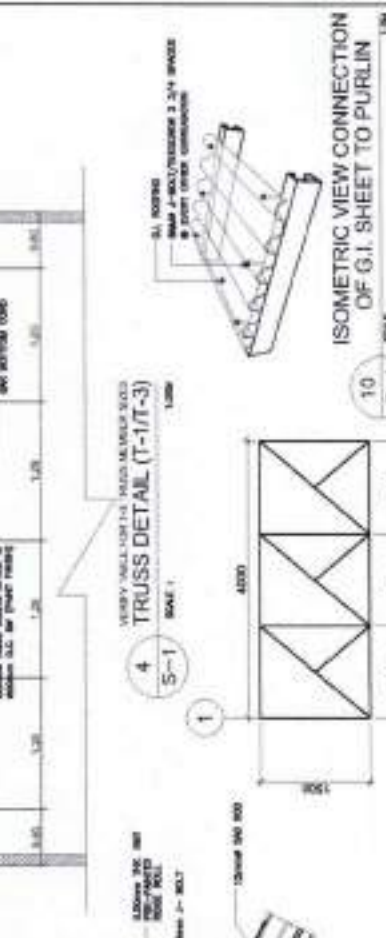
7 GRILLES DETAIL  
A-3 SCALE: 1/8"=1'-0"

<p>DEPARTMENT OF EDUCATION BAGONG LIPUNAN SCHOOL BUILDING (STANDARD DESIGN - TYPE 1)</p>	<p>DESIGNER: <i>[Signature]</i> DATE: 08/15/18</p>	<p>REVISIONS: <i>[Signature]</i> DATE: 08/15/18</p>	<p>APPROVED: <i>[Signature]</i> DATE: 08/15/18</p>	<p>PROJECT NO: BLSB TYPE 1 NPSS</p>	<p>DEPARTMENT OF EDUCATION BAGONG LIPUNAN SCHOOL BUILDING (STANDARD DESIGN - TYPE 1)</p>	<p>DATE: 08/15/18</p>	<p>SCALE: 1/8"=1'-0"</p>	<p>PROJECT NO: A-3 3</p>
--	--	---	--	---	--	-----------------------	--------------------------	------------------------------



**1-3 SCHEDULE OF TRUSS MEMBERS**

DESCRIPTION	QTY	SIZE	NO.	1-3
TOP CHORD	1	24" X 24" X 1/2"	1	18' X 18' X 1/2"
BOTTOM CHORD	1	24" X 24" X 1/2"	1	18' X 18' X 1/2"
WEBS	1	24" X 24" X 1/2"	1	18' X 18' X 1/2"
END JOISTS	1	24" X 24" X 1/2"	1	18' X 18' X 1/2"



**DepEd**  
DEPARTMENT OF EDUCATION  
DIVISION OFFICE - CAGAYAN DE PASIG

**BANGONG LUPKIAN SCHOOL BUILDING**  
(STANDARD DESIGN - TYPE 1)

**BLSB TYPE 1**  
MFSS

**DEPARTMENT OF EDUCATION**  
DepEd

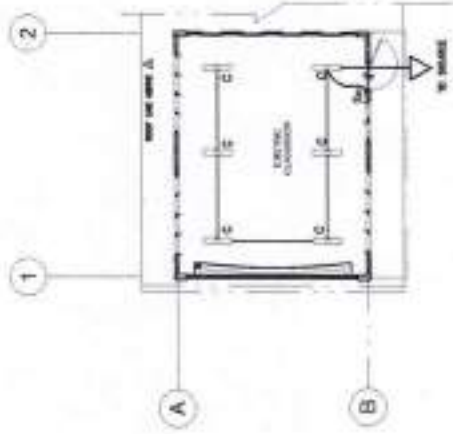
**S-1**  
1

## GENERAL NOTES

1. ALL ELECTRICAL WORKS SHALL COMPLY IN ACCORDANCE WITH THESE PLANS AND SPECIFICATIONS, THE APPLICABLE PROVISIONS OF THE LATEST EDITION OF THE PHILIPPINE ELECTRICAL CODE (PEC), THE RULES AND REGULATIONS OF THE LOCAL ENFORCING AUTHORITY AND THE REQUIREMENTS OF THE LOCAL POWER COMPANY. ALL ELECTRICAL WORKS SHALL BE UNDER THE IMMEDIATE SUPERVISION OF A QUALY REGISTERED ELECTRICAL ENGINEER.
2. THE ELECTRICAL SERVICE POWER IS 1-PHASE, 3-WIRE, 230 V AC, 60 Hz.
3. WIRING METHOD SHALL BE AS FOLLOWS :  
 a. FEEDERS AND RISERS - RIGID METALLIC CONDUIT  
 b. LIGHTING, POWER RECEPTACLE - POLYVINYL CHLORIDE CONDUIT BRANCH OUTL. & AUXILIARY SCH. 40  
 c. ALL WIRES SHALL BE COPPER AND THERMOPLASTIC INSULATED TYPE "SWM" UNLESS OTHERWISE INDICATED IN THE PLAN. THE MINIMUM SIZE OF WIRE FOR POWER AND LIGHTING CIRCUIT HOMERUN SHALL BE 3.5mm<sup>2</sup> AND ISOLATED FOR 600 VOLTS. SMALLEST RADIWAY SHALL BE 15mm<sup>2</sup> TRAPEZOIDAL SIZE.
4. ALL OUTLET BOXES SHALL BE GALVANIZED GAGE NO. 16 DEEP TYPE WITH FACTORY INDOOROUTL.
5. ALL MATERIALS TO BE USED SHALL BE BRAND NEW AND APPROVED TYPE FOR THE PARTICULAR LOCATION AND PURPOSE.
6. GROUNDING SYSTEM SHALL BE PROVIDED TO ALL LIGHTING AND POWER CIRCUIT AS PER PHILIPPINE ELECTRICAL CODE REQUIREMENT.
7. MOUNTING HEIGHT OF WIRING DEVICES SHALL BE AS FOLLOWS :  
 a. LIGHT SWITCH - 1.20 M ABOVE FINISH FLOOR  
 b. CONVENIENCE OUTLET - 0.30 M ABOVE FINISH FLOOR  
 c. SAFETY SWITCH - 1.60 M ABOVE FINISH FLOOR

## LEGEND

SYMBOL	DESCRIPTION
⬇	DELAG LIGHT OUTLET
⊕	ONE GANG DEVICE SWITCH
□	FLOURESCENT



1 LIGHTING LAYOUT  
E-1

  
 JOCELYN P. OLLANO  
 PROJECT ENGINEER

  
 J. P. OLLANO, JR.  
 PROJECT ENGINEER

  
 J. P. OLLANO, JR.  
 PROJECT ENGINEER

  
 J. P. OLLANO, JR.  
 PROJECT ENGINEER

PROJECT NO. :  
 BAGOING LIBRARIAN SCHOOL BUILDING  
 (STANDARD DESIGN - TYPE 1)

BLSS TYPE 1  
 MPSS

DEPARTMENT OF EDUCATION  
 Div. Office  
 Marikina City

SHEET NO. :  
 E-1  
 1

**TABLE OF CONTENTS**

**ARCHITECTURAL**

A-1 PERSPECTIVE VIEW TABLE OF CONTENTS

A-2 FLOOR PLAN ELEVATIONS, RAMP DETAILS

A-3 TRUSS SECTION, CONNECTIONS, SECTIONAL ROOF PLAN, REFLECTED CEILING PLAN, VENT DETAIL

A-4 SCHEDULE OF DOORS AND WINDOWS, GABLE DETAIL, DETAILED-CROSS SECTION

**STRUCTURAL**

S-1 FOUNDATION PLAN, ROOF BEAM PLAN, COLUMN SECTION, SCHEDULE OF COLUMN AND BEAM

S-2 ROOF FRAMING PLAN, TRUSS DETAIL, PURLIN CONNECTION DETAILS

**ELECTRICAL**

E-1 CONSULTANT LEGENDS, LIGHTING LAYOUT

**SANITARY**

**OTHERS**

**ARCHITECTURAL**

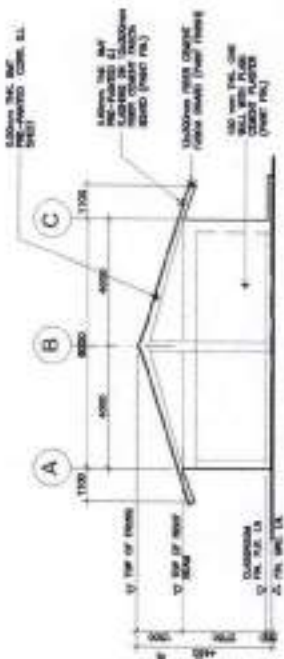
**STRUCTURAL**

**SANITARY**

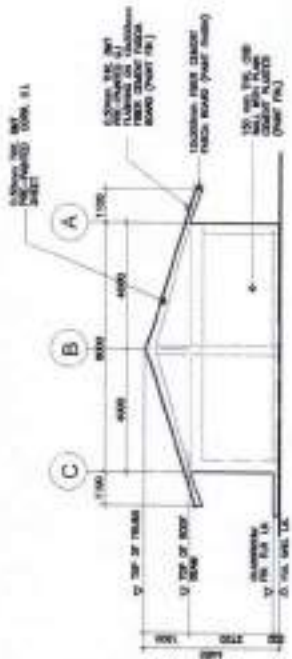
**ELECTRICAL**

**MECHANICAL**

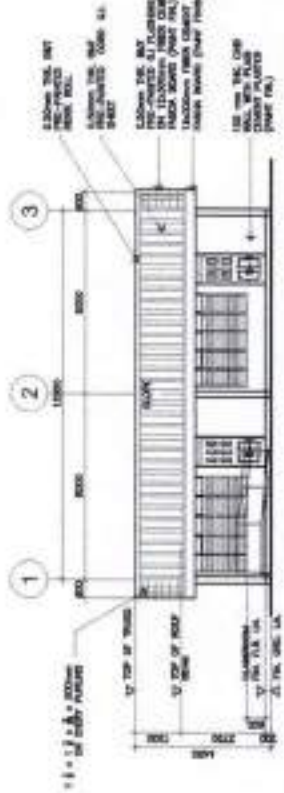
	<p><b>1</b> A-1 PERSPECTIVE VIEW</p> <p>SCALE: 1/8" = 1'-0"</p>		<p><b>2</b> A-1 ACTUAL PHOTO</p> <p>SCALE: 1/8" = 1'-0"</p>	<p>DESIGNED BY:                   JAY P. PINEDA, PE                  PE, SE, LE, BS, AS                  05-10-2024</p>	<p>DESIGNED BY:                   ROBERT J. PINEDA                  PE, SE, LE, BS, AS                  05-10-2024</p>	<p>DESIGNED BY:                   ROBERT J. PINEDA                  PE, SE, LE, BS, AS                  05-10-2024</p>	<p>PROJECT NAME: RP-US SCHOOL BUILDING</p> <p>PROJECT NO.: 24-0000000000</p>	<p>DATE: 05-10-2024</p> <p>SCALE: 1/8" = 1'-0"</p>
--	---	--	---	--	---	---	--	--



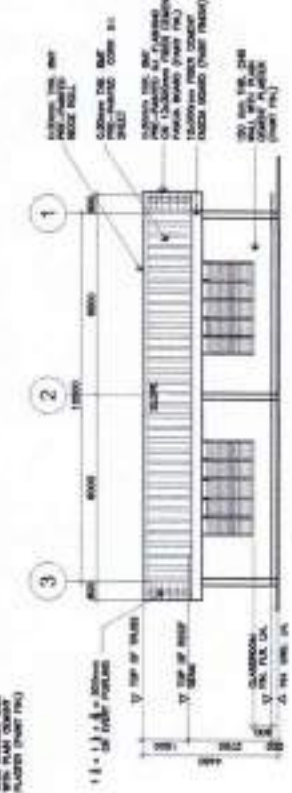
5 LEFT ELEVATION  
SCALE: 1/8" = 1'-0"



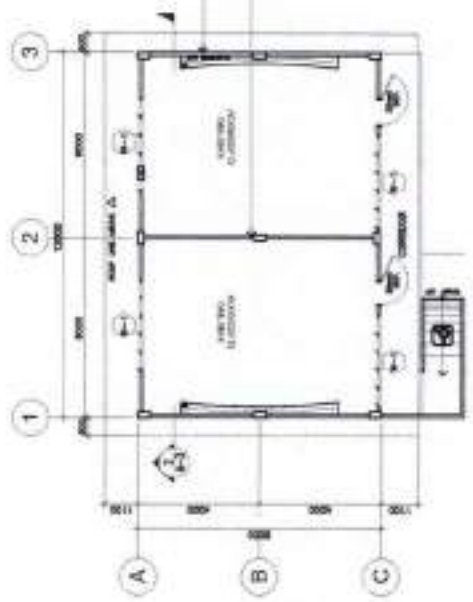
4 RIGHT SIDE ELEVATION  
SCALE: 1/8" = 1'-0"



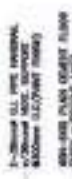
2 FRONT SIDE ELEVATION  
SCALE: 1/8" = 1'-0"



3 REAR SIDE ELEVATION  
SCALE: 1/8" = 1'-0"



1 FLOOR PLAN  
SCALE: 1/8" = 1'-0"



7 RAMP SECTION  
SCALE: 1/8" = 1'-0"



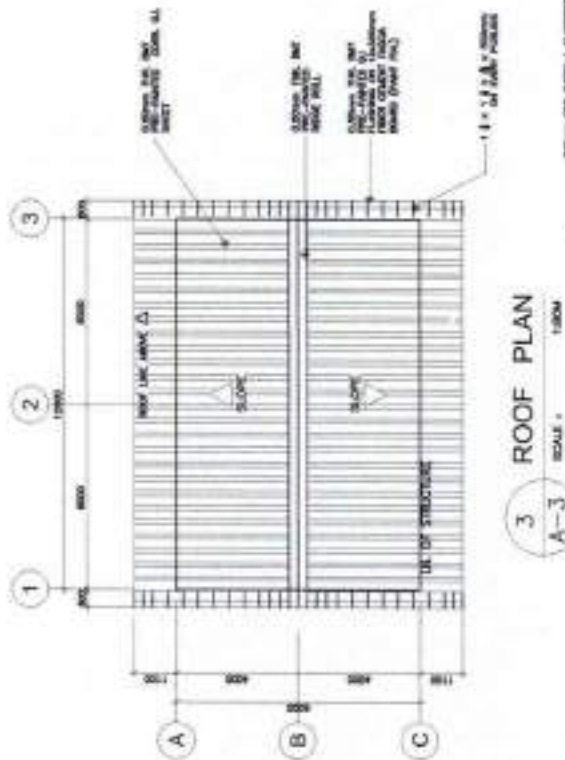
6 RAMP DETAIL  
SCALE: 1/8" = 1'-0"



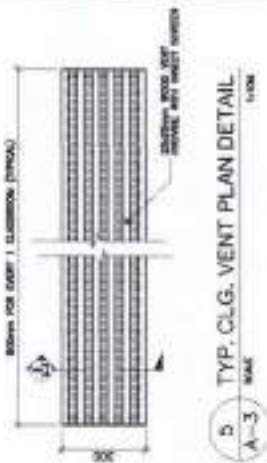
8 SPOT DETAIL  
SCALE: 1/8" = 1'-0"

NOTE: IF THIS WILL BE CHANGED IN THE DESIGN (A) OF THE RAMP, THE RAMP SHALL BE CHANGED AT 1/4" = 1'-0"

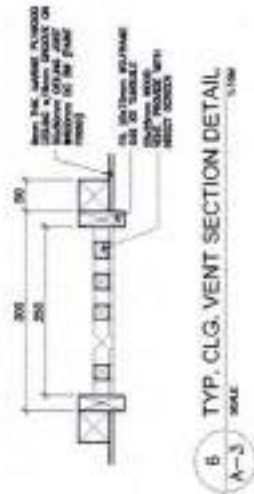
	<p>PROJECT NO. 10-105-00-001</p>	<p>PROJECT TITLE: RAMP SCHOOL BUILDING</p>	<p>PROJECT NO. 10-105-00-001</p>	<p>PROJECT TITLE: RAMP SCHOOL BUILDING</p>	<p>PROJECT NO. 10-105-00-001</p>	<p>PROJECT TITLE: RAMP SCHOOL BUILDING</p>	<p>PROJECT NO. 10-105-00-001</p>	<p>PROJECT NO. 10-105-00-001</p>
<p>DEPARTMENT OF EDUCATION DepEd</p>	<p>PROJECT NO. 10-105-00-001</p>	<p>PROJECT TITLE: RAMP SCHOOL BUILDING</p>	<p>PROJECT NO. 10-105-00-001</p>	<p>PROJECT TITLE: RAMP SCHOOL BUILDING</p>	<p>PROJECT NO. 10-105-00-001</p>	<p>PROJECT TITLE: RAMP SCHOOL BUILDING</p>	<p>PROJECT NO. 10-105-00-001</p>	
<p>PROJECT NO. 10-105-00-001</p>	<p>PROJECT TITLE: RAMP SCHOOL BUILDING</p>	<p>PROJECT NO. 10-105-00-001</p>	<p>PROJECT TITLE: RAMP SCHOOL BUILDING</p>	<p>PROJECT NO. 10-105-00-001</p>	<p>PROJECT TITLE: RAMP SCHOOL BUILDING</p>	<p>PROJECT NO. 10-105-00-001</p>	<p>PROJECT NO. 10-105-00-001</p>	



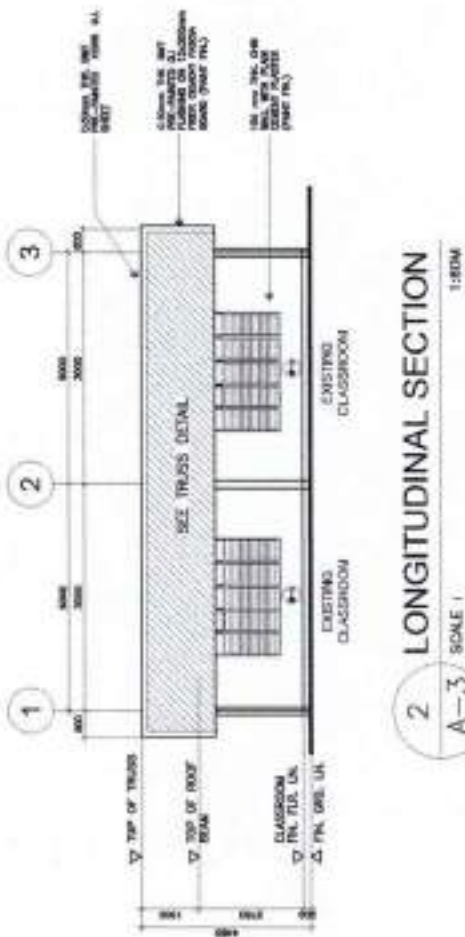
3 ROOF PLAN  
SCALE: 1/8" = 1'-0"



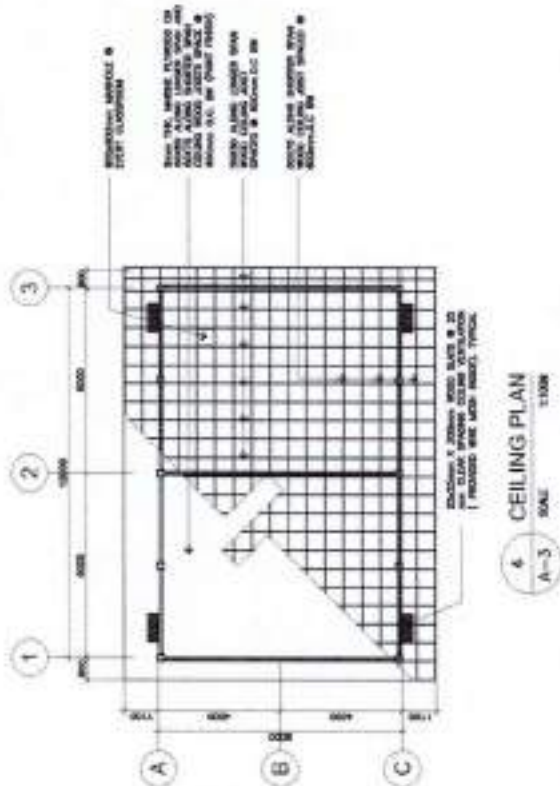
5 TYP. CLG. VENT PLAN DETAIL  
SCALE: 1/8" = 1'-0"



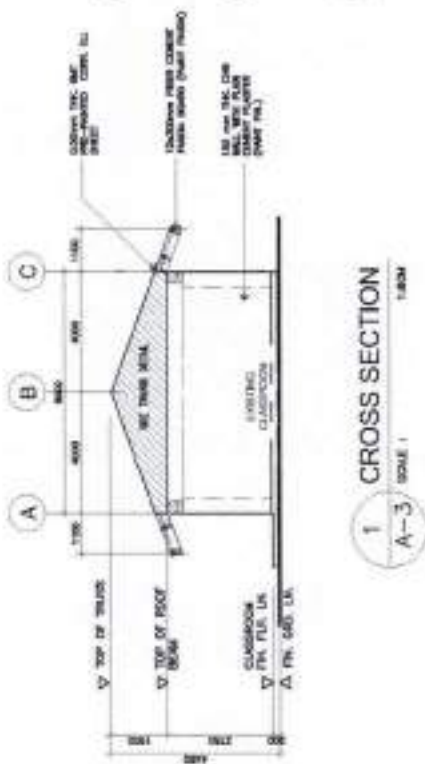
6 TYP. CLG. VENT SECTION DETAIL  
SCALE: 1/8" = 1'-0"



2 LONGITUDINAL SECTION  
SCALE: 1/8" = 1'-0"

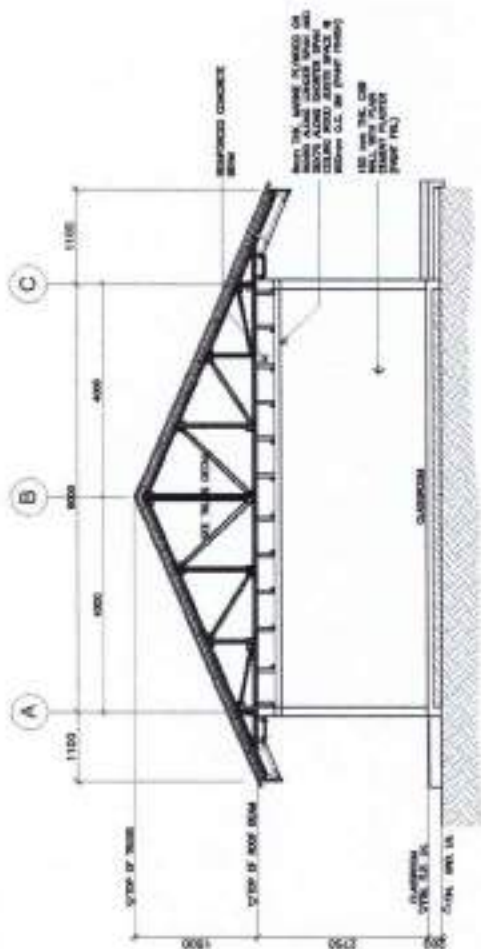


4 CEILING PLAN  
SCALE: 1/8" = 1'-0"

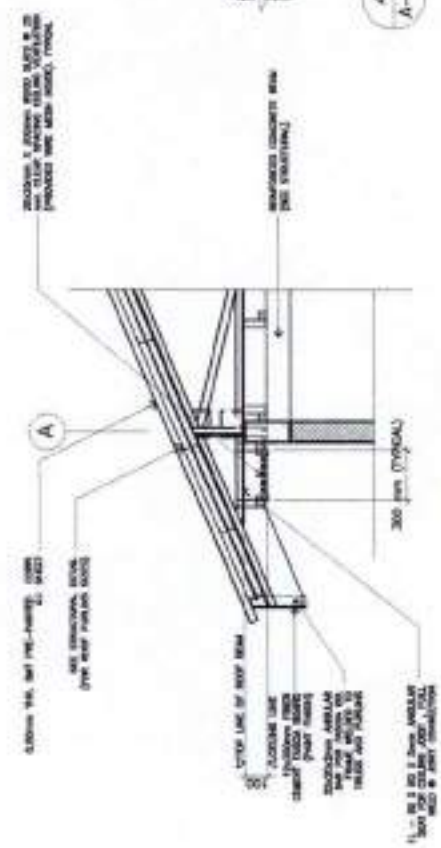


1 CROSS SECTION  
SCALE: 1/8" = 1'-0"

 DIVISION OFFICE - PASAY DEPARTMENT OF EDUCATION (DepEd)	PROJECT NO.: RP-US SB - MPSS SHEET NO.: A-3 SHEET TOTAL: 4
	PROJECT NAME: RP-US SCHOOL BUILDING
	ARCHITECT: JAMES P. CALOOCAN ENGINEER: JAMES P. CALOOCAN ELECTRICAL ENGINEER: JAMES P. CALOOCAN MECHANICAL ENGINEER: JAMES P. CALOOCAN
	DATE: 11/16/2011



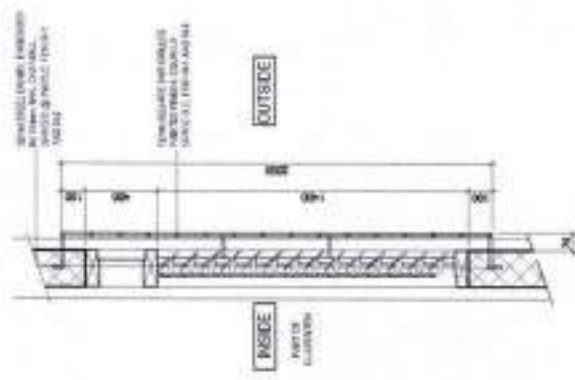
1 DETAILED CROSS SECTION  
A-4 SCALE 1/8" = 1'-0"



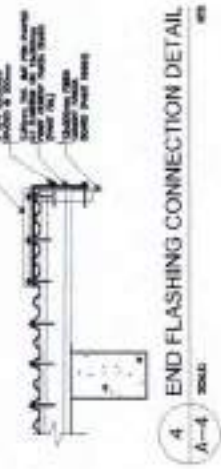
2 TYPICAL DETAIL SECTION OF EAVE (FRONT)  
A-4 SCALE 1/8" = 1'-0"



3 DOOR & WINDOW SCHEDULES  
A-4 SCALE 1/8" = 1'-0"

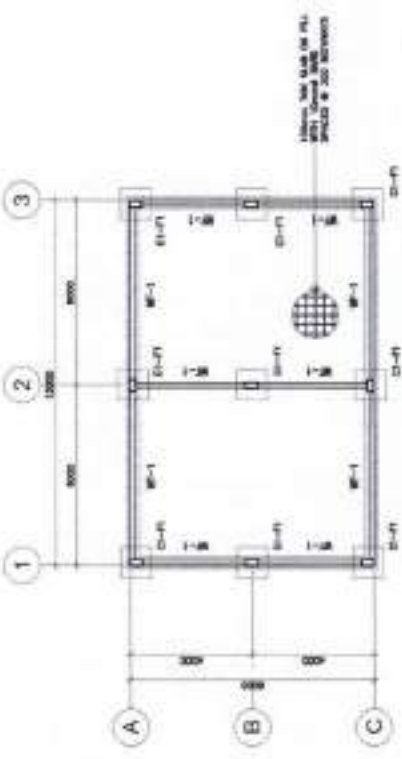


5 DETAIL - GRILLES  
A-4 SCALE 1/8" = 1'-0"

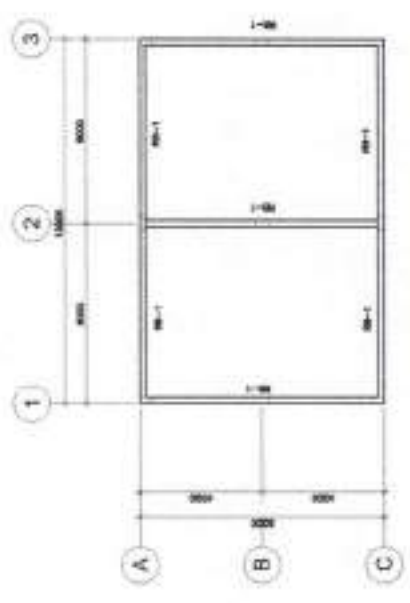


4 END FLASHING CONNECTION DETAIL  
A-4 SCALE 1/8" = 1'-0"

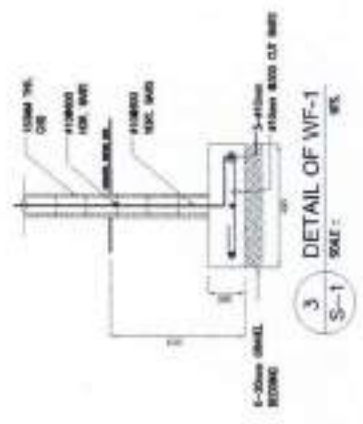
<p>DEPARTMENT OF EDUCATION OFFICE OF THE SUPERINTENDING EDUCATOR DIVISION OFFICE - CAGAYAN DE ORO</p>	<p>DATE: 11/15/2023</p> <p>DESIGNED BY: <i>[Signature]</i></p> <p>CHECKED BY: <i>[Signature]</i></p> <p>APPROVED BY: <i>[Signature]</i></p>	<p>PROJECT NO: RP-US SB - MPSS</p>	<p>PROJECT NAME: RP-US SCHOOL BUILDING</p>	<p>PROJECT NO: 11/15/2023</p>	<p>DATE: 11/15/2023</p> <p>SCALE: A-4</p> <p>NO. OF SHEETS: 4</p>
---	---	------------------------------------	--	-------------------------------	---



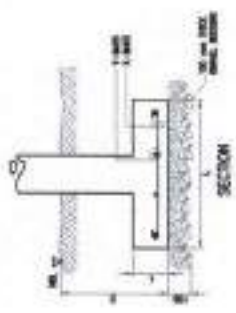
1 FOUNDATION PLAN  
S-1 SCALE 1:1000



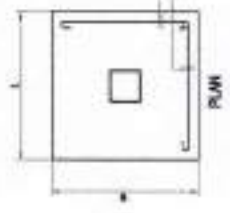
2 ROOF BEAM PLAN  
S-1 SCALE 1:1000



3 DETAIL OF WF-1  
S-1 SCALE 1:50

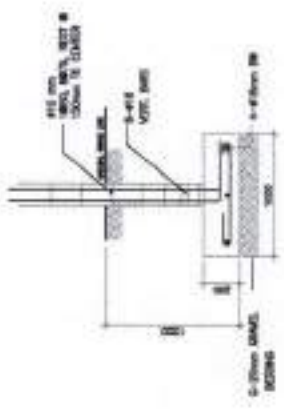


SECTION



PLAN

5 TYP. FOOTING DETAIL  
S-1 SCALE 1:50



4 DETAIL OF C1-F1  
S-1 SCALE 1:50

SCHEDULE OF COLUMN AND BEAM	
LEVEL	REINFORCING
C-1 FOUNDATION LEVEL TO ROOF LEVEL	<p>4-#10mm 100 x 100 mm 100mm CONC. COLUMN TO COLUMN</p>
RB-1	<p>4-#10mm 100 x 413 mm 100mm CONC. BEAM TO COLUMN</p>

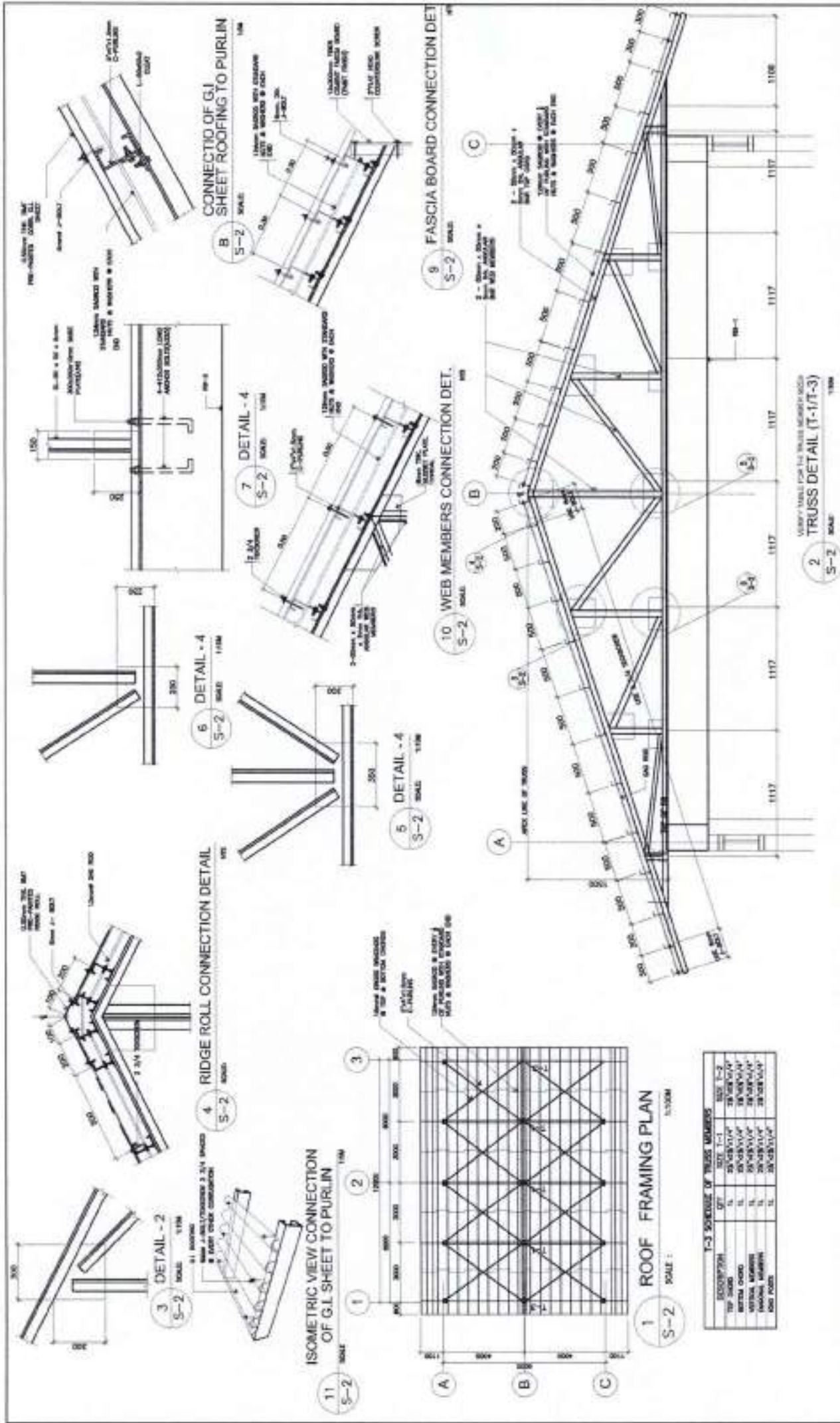
SCHEDULE OF FOOTINGS				
FOOTING MARK	FOOTING DIMENSIONS (mm)		REINFORCING	REMARKS
	WIDTH (mm)	DEPTH (mm)		
F-1	1000	1000	4 - 10mm	1 - 10mm

REMARKS:

- A. CONCRETE  
 f'c = 20,000 psi (1,378.95 N/mm<sup>2</sup>) minimum compressive strength of concrete  
 2.5% air added concrete specified.
- B. REBAR  
 fy = 375.00 Mpa (5,375.00 N/mm<sup>2</sup>) minimum yield strength of reinforcing bars unless otherwise specified.
- C. STRUCTURAL STEEL  
 fy = 248 MPa (35,400 psi) specified minimum yield strength unless otherwise specified.
- D. REINFORCING  
 SFR = 0.3300 lbs (0.1500 kg) wire used in the design for all footings unless noted otherwise.

<b>DepEd</b> DIVISION OFFICE - ILOILO ILOILO CITY, PHILIPPINES	<b>DEPED</b> DIVISION OFFICE - ILOILO ILOILO CITY, PHILIPPINES	<b>DEPED</b> DIVISION OFFICE - ILOILO ILOILO CITY, PHILIPPINES	<b>DEPED</b> DIVISION OFFICE - ILOILO ILOILO CITY, PHILIPPINES	<b>DEPED</b> DIVISION OFFICE - ILOILO ILOILO CITY, PHILIPPINES	<b>DEPED</b> DIVISION OFFICE - ILOILO ILOILO CITY, PHILIPPINES
PROJECT NO. <b>IRP-US SCHOOL BUILDING</b>	SHEET NO. <b>2</b>	SHEET NO. <b>2</b>	SHEET NO. <b>2</b>	SHEET NO. <b>2</b>	SHEET NO. <b>2</b>
PROJECT BY <b>IRP-US SCHOOL BUILDING</b>	DESIGNED BY <b>IRP-US SCHOOL BUILDING</b>	CHECKED BY <b>IRP-US SCHOOL BUILDING</b>	DRAWN BY <b>IRP-US SCHOOL BUILDING</b>	DATE <b>IRP-US SCHOOL BUILDING</b>	DATE <b>IRP-US SCHOOL BUILDING</b>





**1-3 SCHEDULE OF TRUSS MEMBERS**

DESCRIPTION	QTY	SIZE	1-2	1-3
TOP CHORD	12	2X8	2X8	2X8
MIDDLE CHORD	12	2X8	2X8	2X8
UPPER CHORD	12	2X8	2X8	2X8
LOWER CHORD	12	2X8	2X8	2X8
DIAGONAL	12	2X8	2X8	2X8
VERTICAL	12	2X8	2X8	2X8
POST	12	2X8	2X8	2X8

VERIFY TABLE FOR THE TRUSS MEMBER SIZES  
TRUSS DETAIL (T-1/T-3)  
SCALE: 1/8"=1'-0"

<p><b>DepEd</b> DEPARTMENT OF EDUCATION BUREAU OFFICE - CAGAYAN CITY</p>	 NELSON P. DULANE ARCHITECT 100-100 100-100	 JAY P. PACIONA, JR. ARCHITECT 100-100 100-100	 ROBERT M. PACIONA ARCHITECT 100-100 100-100	SHEET NO. DEPARTMENT OF EDUCATION Cagayan City SHEET NUMBER PROJECT NUMBER RP-US SB - MFSS	SHEET NO. <b>S-2</b> <b>2</b>
	SHEET # SHEET # SHEET # SHEET # SHEET #	RP-US SCHOOL BUILDING	RP-US SB - MFSS	SHEET NO. <b>S-2</b> <b>2</b>	

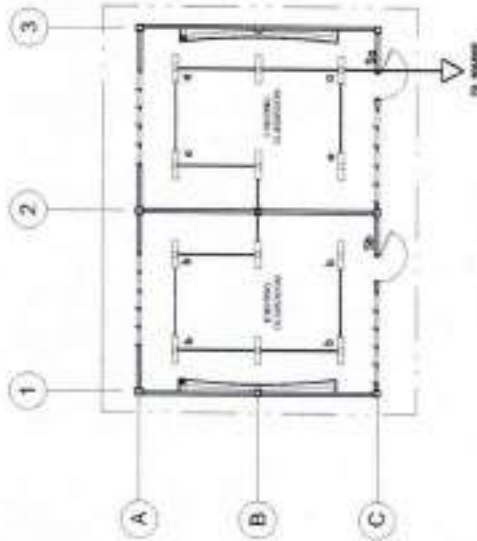
NOT TO SCALE UNLESS SPECIFICALLY NOTED OTHERWISE

## GENERAL NOTES

- ALL ELECTRICAL WORKS SHALL COMPLY IN ACCORDANCE WITH THESE PLANS AND SPECIFICATIONS, THE APPLICABLE PROVISIONS OF THE LATEST EDITION OF THE PHILIPPINE ELECTRICAL CODE (PEC), THE RULES AND REGULATIONS OF THE LOCAL ENFORCING AUTHORITY AND THE REQUIREMENTS OF THE LOCAL POWER COMPANY. ALL ELECTRICAL WORKS SHALL BE UNDER THE IMMEDIATE SUPERVISION OF A DULY REGISTERED ELECTRICAL ENGINEER.
- THE ELECTRICAL SERVICE POWER IS 1-PHASE, 2-WIRE, 230 V AC, 60 Hz.
- WIRING METHOD SHALL BE AS FOLLOWS:
  - FEEDERS AND RISERS - RIGID METALLIC CONDUIT
  - LIGHTING POWER RECEPTACLE - POLYVINYL CHLORIDE CONDUIT BRANCH OUT, & AUXILIARY SCH. 40
- ALL WIRES SHALL BE COPPER AND THERMOPLASTIC INSULATED TYPE "THIN" UNLESS OTHERWISE INDICATED IN THE PLAN. THE MINIMUM SIZE OF WIRE FOR POWER AND LIGHTING CIRCUIT HORIZONTAL SHALL BE 3.0mm<sup>2</sup> AND INSULATED FOR 600 VOLTS. SMALLEST RACEWAY SHALL BE 10mm<sup>2</sup> TRADE/NOMINAL SIZE.
- ALL OUTLET BOXES SHALL BE GALVANIZED GAUGE NO. 18 DEEP TYPE WITH FACTORY PROTECTIONS.
- ALL MATERIALS TO BE USED SHALL BE BRAND NEW AND APPROVED TYPE FOR THE PARTICULAR LOCATION AND PURPOSE.
- GROUNDING SYSTEM SHALL BE PROVIDED TO ALL LIGHTING AND POWER CIRCUIT AS PER PHILIPPINE ELECTRICAL CODE REQUIREMENT.
- MOUNTING HEIGHT OF WIRING DEVICES SHALL BE AS FOLLOWS:
  - LIGHT SWITCH - 1.20 M ABOVE FINISH FLOOR
  - CONVENIENCE OUTLET - 0.30 M ABOVE FINISH FLOOR
  - SAFETY SWITCH - 1.80 M ABOVE FINISH FLOOR

## LEGEND

SYMBOL	DESCRIPTION
◊	ROUND LIGHT OUTLET
□	ONE GANG DEVICE SWITCH
□	FLUORESCENT



1 LIGHTING LAYOUT  
E-1 MAIL  
1.000m

 DEPARTMENT OF EDUCATION DepEd DIVISION OFFICE - MARIKINA CITY NATIONAL ELECTRICAL ENGINEERING BOARD LICENSE NO. 123456789	PROJECT TITLE: RP-US SCHOOL BUILDING	PROJECT CODE: RP-US SB - MPSS	SHEET NO.: E-1 1
	DESIGNER:  DATE:	CHECKER:  DATE:	APPROVED BY:  DATE:

## *Section VIII. Bill of Quantities*

### **Notes on the Bill of Quantities**

#### **Objectives**

The objectives of the Bill of Quantities are:

- a. to provide sufficient information on the quantities of Works to be performed to enable Bids to be prepared efficiently and accurately; and
- b. when a Contract has been entered into, to provide a priced Bill of Quantities for use in the periodic valuation of Works executed.

In order to attain these objectives, Works should be itemized in the Bill of Quantities in sufficient detail to distinguish between the different classes of Works, or between Works of the same nature carried out in different locations or in other circumstances which may give rise to different considerations of cost. Consistent with these requirements, the layout and content of the Bill of Quantities should be as simple and brief as possible.

#### **Daywork Schedule**

A Daywork Schedule should be included only if the probability of unforeseen work, outside the items included in the Bill of Quantities, is high. To facilitate checking by the Entity of the realism of rates quoted by the Bidders, the Daywork Schedule should normally comprise the following:

- a. A list of the various classes of labor, materials, and Constructional Plant for which basic daywork rates or prices are to be inserted by the Bidder, together with a statement of the conditions under which the Contractor will be paid for work executed on a daywork basis.
- b. Nominal quantities for each item of Daywork, to be priced by each Bidder at Daywork rates as Bid. The rate to be entered by the Bidder against each basic Daywork item should include the Contractor's profit, overheads, supervision, and other charges.

#### **Provisional Sums**

A general provision for physical contingencies (quantity overruns) may be made by including a provisional sum in the Summary Bill of Quantities. Similarly, a contingency allowance for possible price increases should be provided as a provisional sum in the Summary Bill of Quantities. The inclusion of such provisional sums often facilitates budgetary approval by avoiding the need to request periodic supplementary approvals as the future need arises. Where such provisional sums or contingency allowances are used, the SCC should state the manner in which they will be used, and under whose authority (usually the Procuring Entity's Representative's).

The estimated cost of specialized work to be carried out, or of special goods to be supplied, by other contractors should be indicated in the relevant part of the Bill of Quantities as a particular provisional sum with an appropriate brief description. A separate procurement procedure is normally carried out by the Procuring Entity to select such specialized contractors. To provide an element of competition among the Bidders in respect of any facilities, amenities, attendance, etc., to be provided by the successful Bidder as prime Contractor for the use and convenience of the specialist contractors, each related provisional sum should be followed by an item in the Bill of Quantities inviting the Bidder to quote a sum for such amenities, facilities, attendance, etc.

### **Signature Box**

A signature box shall be added at the bottom of each page of the Bill of Quantities where the authorized representative of the Bidder shall affix his signature. Failure of the authorized representative to sign each and every page of the Bill of Quantities shall be a cause for rejection of his bid.

These Notes for Preparing a Bill of Quantities are intended only as information for the Procuring Entity or the person drafting the Bidding Documents. They should not be included in the final documents.



**PROGRAM OF WORKS**  
**BILL OF QUANTITIES**  
 REPAIR 2021 - RV1 - SAGAY CITY - 001

School	PLARIDEL ELEMENTARY SCHOOL	Date:	February 2021			
School I.D	117703	Budget Allocation:	PHP 3,004,880.22			
Region	VI	Engineering and Administrative Overhead:	PHP 0.00			
Division	SAGAY CITY	Approved Budget for the Contract:	PHP 3,004,880.22			
Project Title	: PROPOSED REPAIR AND REHABILITATION OF VARIOUS SCHOOL BUILDING (SCL)	Completion Period:	90 calendar days			
		Minimum Required Manpower:				
		General Foreman	Welder	Carpenter		
		Helper	Mason	Painter		
Location	BRGY. PLARIDEL, SAGAY CITY, NEGROS OCCIDENTAL	Minimum Required Equipment:				
		Hand Tools	Welding Machine			
		One-Bagger Mixer	Bar Cutter			
ITEM NO.	Item Description	% of Total	Unit	Quantity	Total Cost	Remarks
<b>I. DIRECT COST</b>						
	GENERAL REQUIREMENTS	1.40%	lot	1.00		
<b>Building 1 : MONTELIBANO Type (7.00m x 7.00m) 3CL</b>						
5.000	Masonry Works	3.86%	sq m	420.00		
6.000	Doors and Windows	9.60%	lot	1.00		
7.000	Steel Works	4.52%	lot	1.00		
8.000	Roofing Works	6.19%	lot	1.00		
9.000	Carpentry Works	5.22%	lot	1.00		
10.000	Electrical Works	2.26%	lot	1.00		
13.000	Painting Works	3.83%	sq m	1,076.18		
2.000	Concreting Works	1.94%	lot	1.00		
<b>Building 2 : BLSB Type 1 (6.60m x 8.00m) 3CL</b>						
5.000	Masonry Works	4.84%	sq m	420.00		
8.000	Roofing Works	6.85%	lot	1.00		
7.000	Steel Works	7.63%	lot	1.00		
9.000	Carpentry Works	5.73%	lot	1.00		
10.000	Electrical Works	1.44%	lot	1.00		
6.000	Doors and Windows	9.60%	lot	1.00		
13.000	Painting Works	2.33%	sq m	451.00		
2.000	Concreting Works	1.47%	lot	1.00		
	<b>Sub-Total</b>					
<b>II. INDIRECT COST 22% of (I)</b>						
	Overhead Expenses (8%)	8.15%				
	Contingencies (3%)	2.31%				
	Miscellaneous (1%)	0.77%				
	Contractor's Profit (10%)	7.69%				
	<b>Sub-Total</b>					
<b>III. TAX 5% of (I+II)</b>						
	<b>Sub-Total</b>	4.76%				
<b>IV. TOTAL CONSTRUCTION COST (I + II + III)</b>						
		100.00%				

Prepared by:

\_\_\_\_\_ Bidder





**PROGRAM OF WORKS  
 DETAILED COST ESTIMATE**

PROJECT : PROPOSED REPAIR AND REHABILITATION OF VARIOUS SCHOOL BUILDING (SCL)  
 SCHOOL : PLARIDEL ELEMENTARY SCHOOL  
 LOCATION : BRGY. PLARIDEL, SAGAY CITY, NEGROS OCCIDENTAL  
 OWNER : DEPARTMENT OF EDUCATION

ITEM NO.	DESCRIPTION	UNIT	QTY	UNIT COST		TOTAL COST		GRAND TOTAL
				MATERIAL	LABOR	MATERIAL	LABOR	
<b>GENERAL REQUIREMENTS</b>								
	Mobilization/Temporary Structures, Utilities and Services/Demobilization	lot	1.00					
	Safety and Health	lot	1.00					
	Project Billboard	lot	1.00					
	Fire Safety Inspection Certificate (FSIC)	lot	1.00					
	Other Permit Fee	lot	1.00					
	Hauling cost	lot	1.00					
	<b>Sub-total</b>							
<b>Building 1 : MONTELIBANO TYPE BLDG (7.00m x 7.00m) 3CL</b>								
5.0000	<b>Masonry Works</b>							
	Masonry Wall	sq.m	140.00					
5.0200	CHB 6" thk	pc	1,200.00					
2.0200	Portland Cement	bag	38.00					
2.0500	Washed Sand	cu.m.	8.00					
5.0400	10mm x 6m RSB	kg	142.00					
3.1200	G.I. Tie Wire	kg	5.00					
	Plastering	sq.m	280.00					
2.0200	Portland Cement	bag	70.00					
2.0500	Washed Sand	cu.m.	8.00					
	<b>Sub-total</b>							
6.0000	<b>Doors and Windows</b>							
6.0100	Removal of Door with Jamb	set	3.00					
6.0200	Removal of Window with Jamb	sq.m	48.00					
6.0200	Removal of Window with Jamb	sq.m	8.00					
6.0600	Door Jamb	bd.ft	66.00					
6.0330	D-2, (0.90m x 2.10m) Panel Door	set	3.00					
6.2000	Hinges, Standard 3-1/2" x 3-1/2"	pc	12.00					
6.1900	Entrance, Lever Lockset	set	3.00					
6.0700	Window Jamb	bd.ft	610.00					
	Jalousie Window with Clear Glass Blades on Jalousie Type Silver Colored Frame with Grilles	sq.ft	480.00					
	<b>Sub-total</b>							
7.0000	<b>Steel Works</b>							
7.0710	L 65 x 65 x 6.0mm	kg	139.20					
7.0900	L 50 x 50 x 6mm	kg	107.28					
7.0410	L 100 x 100 x 6.0mm	kg	216.40					
7.0120	LC 150 x 65 x 20 x 2.0mm	kg	1,031.94					
7.0810	L 75 x 75 x 6mm	kg	40.80					
7.1901	Plain Round Bar 12mmØ x 6m	pc	8.00					
7.1900	Plain Round Bar 16mmØ x 6m	pc	8.00					
7.2100	Turn Buckle 12 mmØ	pc	8.00					
7.1510	Anchor Bolt with Nuts and Washer, 16mmØ x 50mm x 300mm	pc	8.00					
7.1600	Anchor Bolt with Nuts and Washer, 12mmØ x 50mm x 150mm	pc	24.00					
7.1300	Steel Plate 1.20m x 2.40m x 12mm thk	pc	1.00					
7.1020	L 40 x 40 x 5mm	kg	79.20					
7.3600	Welding Rod	kg	31.00					
13.1100	Primer, Zinc Chromate	gal	4.00					
	Hanger							
7.2620	G.I. Pipe 1"Ø Sch. 40	pc	4.00					
7.1060	Flat Bar 1 1/2" x 1/4"	kg	11.71					
13.1100	Primer, Zinc Chromate	gal	4.00					
	<b>Sub-total</b>							
8.0000	<b>Roofing Works</b>							
8.0100	Removal of Roofing Sheets	sq.m	208.28					
8.0200	Removal of Ridge Roll	pc	12.00					
8.0300	Removal of Flashing	pc	12.00					
8.0500	Removal of Fascia Board	pc	28.00					



ITEM NO.	DESCRIPTION	UNIT	QTY	UNIT COST		TOTAL COST		GRAND TOTAL
				MATERIAL	LABOR	MATERIAL	LABOR	
8.0600	G.I. Long-Span Roofing, Corrugated, Pre-Painted, 1220mm x 0.5mm BMT	lm	239.24					
8.0800	G.I. Flashing, Preformed, Pre-Painted, 0.610m x 2.440m x 0.5mm BMT	pc	12.00					
8.0700	G.I. Ridge Roll, Preformed, Pre-Painted, 0.610m x 2.440m x 0.5mm BMT	pc	12.00					
7.1040	L 20 x 20 x 2mm	kg	110.00					
7.1020	L 38 x 38 x 4.5mm	kg	70.00					
	3" Flat head Countersunk screw	pc	412.00					
8.1000	Teckscrew 2-1/2"	pc	2,442.00					
8.1300	Roof Sealant	L	3.00					
8.1100	Blind Rivets	pc	360.00					
	<b>Sub-total</b>							
9.0000	<b>Carpentry Works</b>							
	Interior ceiling	sq.m	147.00					
9.0100	Removal of Ceiling	sq.m	147.00					
9.0500	Plywood, Marine 1/4" x 4' x 8'	pc	50.00					
	50 mm x 50 mm Ceiling Joist	bd.ft	230.00					
	50 mm x 75 mm Ceiling Joist	bd.ft	330.00					
9.1700	Rough Lumber, Sun Dried, Tanguile	bd.ft	560.00					
9.2100	Finishing Nails	kg	2.00					
4.0400	CWN, Assorted	kg	15.00					
9.2200	Concrete Nails	kg	2.00					
9.1900	Wood Preservative, Brown	L	5.00					
	Exterior ceiling	sq.m	53.20					
9.0100	Removal of Ceiling	sq.m	53.20					
9.0500	Plywood, Marine 1/4" x 4' x 8'	pc	25.00					
	50 mm x 50 mm Ceiling Joist	bd.ft	155.00					
	50 mm x 75 mm Ceiling Joist	bd.ft	135.00					
9.1700	Rough Lumber, Sun Dried, Tanguile	bd.ft	290.00					
9.2100	Finishing Nails	kg	1.00					
4.0400	CWN, Assorted	kg	8.00					
9.2200	Concrete Nails	kg	1.00					
9.1900	Wood Preservative, Brown	L	2.00					
	Partition Wall	sq.m	39.20					
9.0090	Removal of Partition	sq.m	39.20					
9.0500	Plywood, Marine 1/4" x 4' x 8'	pc	15.00					
9.1700	Rough Lumber, Sun Dried, Tanguile	bd.ft	180.00					
9.2100	Finishing Nails	kg	1.00					
4.0400	CWN, Assorted	kg	2.00					
9.2200	Concrete Nails	kg	1.00					
9.1900	Wood Preservative, Brown	L	1.00					
	Blackboards		17.28					
9.1800	S4S Lumber, Kiln Dried, Tanguile	bd.ft	110.00					
9.2000	Lawanit, 1/4" thk	pc	6.00					
9.2100	Finishing Nails	kg	1.00					
4.0400	CWN, Assorted	kg	2.00					
9.2200	Concrete Nails	kg	1.00					
	<b>Sub-total</b>							
10.0000	<b>Electrical Works</b>							
	Roughing-ins							
10.0100	Electrical Conduit uPVC, 15mmØ	pc	72.00					
10.0490	RSC 20mmØ	pc	1.00					
10.0900	Entrance Cap 20mm dia.	pc	1.00					
10.1200	Junction Box, 4" x 4" G.I.	pc	18.00					
10.1300	Utility Box, 2" x 4" G.I.	pc	12.00					
10.1400	Grounding Rod, 2.4m x 16mm dia.	pc	1.00					
	Wires & Fixtures							
10.1600	3.5 mm² THHN Wire, Stranded	m	648.00					
10.1700	5.5 mm² THHN Wire, Stranded	m	10.00					
10.2700	Duplex Convenience Outlet, Grounding Type, 20A, 250V	set	4.00					
10.3200	3 Single Pole Wall Switches in One Switch Plate (10 AMP, 230V)	set	2.00					
10.2900	Single Pole Wall Switch in One Switch Plate (10 AMP, 230V)	set	2.00					
10.3620	FL 2 x 40W Industrial Type	set	12.00					
10.3610	FL 1 x 40W Industrial Type	set	3.00					
10.3700	Panel Box, Flush Type, 4 Branches	set	1.00					
10.4300	Circuit Breaker, 40A 2P	set	1.00					
10.4100	Circuit Breaker, 20A 2P	set	3.00					
10.5500	Electrical Tape	pc	1.00					
10.5400	Wall Fan, 60W, 230V, 60Hz	set	6.00					
	<b>Sub-total</b>							
13.0000	<b>Painting Works</b>							

ITEM NO.	DESCRIPTION	UNIT	QTY	UNIT COST		TOTAL COST		GRAND TOTAL
				MATERIAL	LABOR	MATERIAL	LABOR	
	Concrete surfaces	sq.m	428.53					
13.0100	Neutralizer	gal	8.00					
13.0200	Latex, Flat	gal	18.00					
13.0400	Latex, Semi Gloss	gal	18.00					
13.0500	Acrl Color	qrt	5.00					
	Interior Ceiling	sq.m	147.00					
13.0600	Enamel, Flatwall	gal	8.00					
13.0800	Enamel, Semi Gloss	gal	15.00					
13.0900	Paint Thinner	L	8.00					
	Exterior Ceiling	sq.m	65.27					
13.0600	Enamel, Flatwall	gal	4.00					
13.0800	Enamel, Semi Gloss	gal	7.00					
13.0900	Paint Thinner	L	3.00					
	Wood surfaces	sq.m	434.39					
13.0600	Enamel, Flatwall	gal	22.00					
13.0800	Enamel, Semi Gloss	gal	22.00					
13.0900	Paint Thinner	L	11.00					
	<b>Sub-total</b>							
<b>2.0000</b>	<b>Concreting Works</b>							
	Ramp on Fill (with Ramp Rating)	lot	1.00					
	Patching up for electrical roughing-in & doors and window jamb replacement	cu.m.	2.50					
2.0200	Portland Cement	bag	30.00					
2.0500	Washed Sand	cu.m.	2.50					
	Slab on Grade (Hallway)	cu.m.	2.50					
2.0200	Portland Cement	bag	30.00					
2.0500	Washed Sand	cu.m.	2.50					
	<b>Sub-total</b>							
<b>Building 2 : BLSB TYPE 1 (6.00m x 8.00m) 3CL</b>								
<b>5.0000</b>	<b>Masonry Works</b>							
	Masonry Wall	sq.m	140.00					
5.0200	CHB 6" thk	pc	1,750.00					
2.0200	Portland Cement	bag	45.00					
2.0500	Washed Sand	cu.m	8.00					
5.0400	10mm x 6m RSB	kg	200.00					
3.1200	G.I. Tie Wire	kg	5.00					
	Plastering	sq.m	300.00					
2.0200	Portland Cement	bag	85.00					
2.0500	Washed Sand	cu.m	8.00					
	<b>Sub-total</b>							
<b>8.0000</b>	<b>Roofing Works</b>							
8.0100	Removal of Roofing Sheets	sq.m	237.00					
8.0200	Removal of Ridge Roll	pc	12.00					
8.0300	Removal of Flashing	pc	14.00					
8.0500	Removal of Fascia Board	pc	33.00					
8.0600	G.I. Long-Span Roofing, Corrugated, Pre-Painted, 1220mm x 0.5mm BMT	lm	288.00					
8.0810	G.I. Flashing, Preformed, Pre-Painted, 0.610m x 2.440m x 0.5mm BMT	pc	14.00					
8.0700	G.I. Ridge Roll, Preformed, Pre-Painted, 0.610m x 2.440m x 0.5mm BMT	pc	12.00					
	L 20 x 20 x 2mm	kg	96.00					
	L 38 x 38 x 4.5mm	kg	65.00					
	3" Flat head Countersunk screw	pc	380.00					
8.1000	Teckscrew 2-1/2"	pc	2,772.00					
8.1300	Roof Sealant	L	3.00					
8.1100	Blind Rivets	pc	255.00					
	<b>Sub-total</b>							
<b>7.0000</b>	<b>Steel Works</b>							
7.0710	L 65 x 65 x 6.0mm	kg	209.00					
7.0900	L 50 x 50 x 6mm	kg	181.00					
7.0410	L 100 x 100 x 6.0mm	kg	328.00					
7.0120	LC 150 x 65 x 20 x 2.0mm	kg	2,085.00					
7.0810	L 75 x 75 x 6mm	kg	62.00					
7.1901	Plain Round Bar 12mmØ x 6m	pc	12.00					
7.1900	Plain Round Bar 16mmØ x 6m	pc	12.00					
7.2100	Turn Buckle 12 mmØ	pc	12.00					
7.1510	Anchor Bolt with Nuts and Washer, 16mmØ x 50mm x 300mm	pc	12.00					
7.1600	Anchor Bolt with Nuts and Washer, 12mmØ x 50mm x 150mm	pc	36.00					
7.1300	Steel Plate 1.20m x 2.40m x 12mm thk	pc	2.00					
7.1020	L 40 x 40 x 5mm	kg	119.00					
7.3600	Welding Rod	kg	57.00					



ITEM NO.	DESCRIPTION	UNIT	QTY	UNIT COST		TOTAL COST		GRAND TOTAL
				MATERIAL	LABOR	MATERIAL	LABOR	
13.1100	Primer, Zinc Chromate	gal	5.00					
	Sub-total							
9.0000	<b>Carpentry Works</b>							
	<i>Interior ceiling</i>							
9.0100	Removal of Ceiling	sq.m	144.00					
9.0500	Plywood, Marine 1/4" x 4' x 8'	pc	55.00					
	50 mm x 50 mm Ceiling Joist	bd.ft	315.00					
	50 mm x 75 mm Ceiling Joist	bd.ft	472.50					
9.1700	Rough Lumber, Sun Dried, Tanguile	bd.ft	797.50					
9.2100	Finishing Nails	kg	3.00					
4.0400	CWN, Assorted	kg	15.00					
9.2200	Concrete Nails	kg	3.00					
9.1900	Wood Preservative, Brown	L	3.00					
	<i>Exterior Ceiling</i>							
9.0100	Removal of Ceiling	sq.m	67.44					
9.0500	Plywood, Marine 1/4" x 4' x 8'	pc	24.00					
	50 mm x 50 mm Ceiling Joist	bd.ft	219.20					
	50 mm x 75 mm Ceiling Joist	bd.ft	196.70					
9.1700	Rough Lumber, Sun Dried, Tanguile	bd.ft	415.90					
9.2100	Finishing Nails	kg	1.00					
4.0400	CWN, Assorted	kg	5.00					
9.2200	Concrete Nails	kg	1.00					
9.1900	Wood Preservative, Brown	L	2.00					
	<i>Partition Wall</i>							
9.0090	Removal of Partition	sq.m	22.44					
9.0500	Plywood, Marine 1/4" x 4' x 8'	pc	10.00					
9.1700	Rough Lumber, Sun Dried, Tanguile	bd.ft	150.00					
9.2100	Finishing Nails	kg	2.00					
4.0400	CWN, Assorted	kg	4.00					
9.2200	Concrete Nails	kg	2.00					
9.1900	Wood Preservative, Brown	L	1.00					
	<i>Blackboards</i>							
9.1700	Rough Lumber, Sun Dried, Tanguile	bd.ft	111.00					
9.2000	Lawanit, 1/4" thk	pc	6.00					
9.2100	Finishing Nails	kg	2.00					
4.0400	CWN, Assorted	kg	3.00					
9.2200	Concrete Nails	kg	2.00					
	Sub-total							
10.0000	<b>Electrical Works</b>							
	<i>Roughing-ins</i>							
10.0100	Electrical Conduit uPVC, 15mmØ	pc	36.00					
10.0490	RSC 20mmØ	pc	2.00					
10.0800	Entrance Cap 20mm dia.	pc	2.00					
10.1200	Junction Box, 4" x 4" G.I.	pc	12.00					
10.1300	Utility Box, 2" x 4" G.I.	pc	6.00					
	<i>Wires &amp; Fixtures</i>							
10.1600	3.5 mm <sup>2</sup> THHN Wire, Stranded	m	324.00					
10.2700	Duplex Convenience Outlet, Grounding Type,	set	6.00					
10.3200	3 Single Pole Wall Switches in One Switch	set	3.00					
10.3610	FL 1 x 40W Industrial Type	set	15.00					
10.3310	Safety Switch 30A 2P	set	2.00					
10.5500	Electrical Tape	pc	3.00					
10.5400	Wall Fan, 60W, 230V, 60Hz	set	6.00					
	Sub-total							
6.0000	<b>Doors and Windows</b>							
6.0100	Removal of Door with Jamb	set	3.00					
6.0200	Removal of Window with Jamb	sq.m	51.00					
6.0200	Removal of Window with Jamb	sq.m	9.00					
6.0600	Door Jamb	bd.ft	66.00					
6.0330	D-2, (0.90m x 2.10m) Panel Door	set	3.00					
6.2000	Hinges, Standard 3-1/2" x 3-1/2"	pa	12.00					
6.1900	Entrance Lever Lockset	set	3.00					
6.0700	Window Jamb	bd.ft	610.00					
	Jalousie Window with Clear Glass Blades on JalouPlus Type Silver Colored Frame with Grilles	sq.ft	480.00					
	Sub-total							
13.0000	<b>Painting Works</b>							
	<i>Concrete surfaces</i>							
13.0100	Neutralizer	gal	3.00					
13.0200	Latex, Flat	gal	7.00					
13.0400	Latex, Semi Gloss	gal	7.00					
13.0500	Acri Color	qrt	2.00					
	<i>Interior Ceiling</i>							
13.0600	Enamel, Flatwall	gal	8.00					

ITEM NO.	DESCRIPTION	UNIT	QTY	UNIT COST		TOTAL COST		GRAND TOTAL
				MATERIAL	LABOR	MATERIAL	LABOR	
13.0800	Enamel, Semi Gloss	gal	16.00					
13.0900	Paint Thinner	L	6.00					
	Exterior Ceiling	sq.m	0.00					
13.0600	Enamel, Flatwall	gal	0.00					
13.0800	Enamel, Semi Gloss	gal	0.00					
13.0900	Paint Thinner	L	0.00					
	Partition Wall	sq.m	0.00					
13.0600	Enamel, Flatwall	gal	0.00					
13.0800	Enamel, Semi Gloss	gal	0.00					
13.0900	Paint Thinner	L	0.00					
	Doors and Windows	sq.m	132.00					
13.0600	Enamel, Flatwall	gal	7.00					
13.0700	Glazing Putty	gal	7.00					
13.0800	Enamel, Semi Gloss	gal	14.00					
13.0900	Paint Thinner	L	6.00					
	<b>Sub-total</b>							
2.0000	<b>Concreting Works</b>							
	Ramp on Fill (with Ramp Railing)	lot	1.00					
	Patching up for electrical roughing-in & doors and window jamb replacement	cu.m.	2.50					
2.0200	Portland Cement	bag	28.00					
2.0500	Washed Sand	cu.m.	2.50					
	<b>Sub-total</b>							
	<b>DIRECT COST</b>							
	<b>INDIRECT COST 22% of (I)</b>							
	<b>TAX 5% of (I + II)</b>							
	<b>TOTAL CONSTRUCTION COST (I + II + III)</b>							

Prepared by:

\_\_\_\_\_  
Bidder

## ***Section IX. Checklist of Technical and Financial Documents***

### **Notes on the Checklist of Technical and Financial Documents**

The prescribed documents in the checklist are mandatory to be submitted in the Bid, but shall be subject to the following:

- a. GPPB Resolution No. 09-2020 on the efficient procurement measures during a State of Calamity or other similar issuances that shall allow the use of alternate documents in lieu of the mandated requirements; or
- b. any subsequent GPPB issuances adjusting the documentary requirements after the effectivity of the adoption of the PBDs.

The BAC shall be checking the submitted documents of each Bidder against this checklist to ascertain if they are all present, using a non-discretionary “pass/fail” criterion pursuant to Section 30 of the 2016 revised IRR of RA No. 9184.

# Checklist of Technical and Financial Documents

## I. TECHNICAL COMPONENT ENVELOPE

### *Class "A" Documents*

#### Legal Documents

- (a) Valid PhilGEPS Registration Certificate (Platinum Membership) (all pages);  
**or**
- (b) Registration certificate from Securities and Exchange Commission (SEC), Department of Trade and Industry (DTI) for sole proprietorship, or Cooperative Development Authority (CDA) for cooperatives or its equivalent document;  
**and**
- (c) Mayor's or Business permit issued by the city or municipality where the principal place of business of the prospective bidder is located, or the equivalent document for Exclusive Economic Zones or Areas;  
**and**
- (e) Tax clearance per E.O. No. 398, s. 2005, as finally reviewed and approved by the Bureau of Internal Revenue (BIR).

#### Technical Documents

- (f) Statement of the prospective bidder of all its ongoing government and private contracts, including contracts awarded but not yet started, if any, whether similar or not similar in nature and complexity to the contract to be bid; **and**
- (g) Statement of the bidder's Single Largest Completed Contract (SLCC) similar to the contract to be bid, except under conditions provided under the rules;  
**and**
- (h) Philippine Contractors Accreditation Board (PCAB) License;  
**or**  
Special PCAB License in case of Joint Ventures;  
**and** registration for the type and cost of the contract to be bid; **and**
- (i) Original copy of Bid Security. If in the form of a Surety Bond, submit also a certification issued by the Insurance Commission;  
**or**  
Original copy of Notarized Bid Securing Declaration; **and**
- (j) Project Requirements, which shall include the following:
  - a. Organizational chart for the contract to be bid;
  - b. List of contractor's key personnel (*e.g.*, Project Manager, Project Engineers, Materials Engineers, and Foremen), to be assigned to the contract to be bid, with their complete qualification and experience data;
  - c. List of contractor's major equipment units, which are owned, leased, and/or under purchase agreements, supported by proof of ownership or certification of availability of equipment from the equipment lessor/vendor for the duration of the project, as the case may be; **and**
- (k) Original duly signed Omnibus Sworn Statement (OSS);

**and** if applicable, Original Notarized Secretary's Certificate in case of a corporation, partnership, or cooperative; or Original Special Power of Attorney of all members of the joint venture giving full power and authority to its officer to sign the OSS and do acts to represent the Bidder.

Financial Documents

- (l) The prospective bidder's audited financial statements, showing, among others, the prospective bidder's total and current assets and liabilities, stamped "received" by the BIR or its duly accredited and authorized institutions, for the preceding calendar year which should not be earlier than two (2) years from the date of bid submission; **and**
- (m) The prospective bidder's computation of Net Financial Contracting Capacity (NFCC).

**Class "B" Documents**

- (n) If applicable, duly signed joint venture agreement (JVA) in accordance with RA No. 4566 and its IRR in case the joint venture is already in existence; **or** duly notarized statements from all the potential joint venture partners stating that they will enter into and abide by the provisions of the JVA in the instance that the bid is successful.

**II. FINANCIAL COMPONENT ENVELOPE**

- (o) Original of duly signed and accomplished Financial Bid Form; **and**

Other documentary requirements under RA No. 9184

- (p) Original of duly signed Bid Prices in the Bill of Quantities; **and**
- (q) Duly accomplished Detailed Estimates Form, including a summary sheet indicating the unit prices of construction materials, labor rates, and equipment rentals used in coming up with the Bid; **and**
- (r) Cash Flow by Quarter.

